



# Metro Master Gardener™ News

## June 2009

### OSU Extension Service Metro Master Gardener™ Program

Serving [Clackamas](#), [Multnomah](#), and [Washington](#) Counties in the metro area since 1976.

#### Mission Statement

We provide relevant, research-based education and outreach to the public of Clackamas, Multnomah, and Washington Counties about horticulture and household pests. This information promotes sustainable practices that minimize risks to human health and the environment.

#### Program Staff

**Weston Miller- Horticulture Faculty**

[weston.miller@oregonstate.edu](mailto:weston.miller@oregonstate.edu)

(503) 650-3124

**Jordis Yost- Program Assistant**

[jordis.yost@oregonstate.edu](mailto:jordis.yost@oregonstate.edu)

(503) 650-3118

#### Newsletter Volunteers

**Ellen Hanley- Volunteer Editor**

[ellenpoppy@aol.com](mailto:ellenpoppy@aol.com)

**Heidi Nichols- Proof Reader**

[heidinichols@comcast.net](mailto:heidinichols@comcast.net)

#### Mailing Address

Clackamas County Extension Service  
200 Warner-Milne Rd.  
Oregon City, OR 97045



## Table of Contents

	<u>Page</u>
Metro Program Update by Weston Miller	2
Opportunities from Jordis	3
Natter's Notes – Maladies and Munchers	5
Horticultural Calendar	8
Notices	8
MG Computer Class information	10
Clackamas County Page	11
Washington County Page	12
Multnomah County Page	13
Garden Hints for June	14

Dear Master Gardeners-

How grows your garden this spring? I hope that the Metro Master Gardener newsletter finds you well.

I've enjoyed some time off work in April with my growing family. "Baby Joe," as we call our 6-week old, is slowly emerging out of the larval stage of human development. He is putting on weight (and rolls of fat), lifting his head a bit, and has the faintest of smiles. It is amazing to watch his development. I've also been spending a lot of time with Casey, our sprightly 2-year old who is moving along through the various instars of the nymph stage of human development. Katie, my wife, is resuming normal activities and we both have our hands full with the boys. All is well in baby land.

In terms of the Metro Master Gardener Program, most of our volunteer opportunities are in full swing. Here are several highlights so far:

- The 25<sup>th</sup> Annual Spring Garden Fair put on by the Clackamas County Master Gardeners was very successful again this year attracting over 16,000 attendees and 305 participants at 10-Minute University classes conducted by Master Gardener volunteers.
- The Washington County Master Gardeners hosted at least 65 people at their demonstration garden as part of the Metro Natural Gardening Tour.
- Over 1600 people in April alone have been served by (mostly) Master Gardener volunteers at the Oregon Zoo.
- We've established our new telephone clinic at the West Multnomah Soil and Water Conservation District office in NW Portland and we've received a surprising number of inquiries from Master Gardeners and the general public alike.

Of course, there are many other activities that we are involved with across the metro area. I am continually humbled by the generosity of spirit that YOU contribute toward our educational organization. Thank you for your time and energy. We appreciate all of YOUR contributions to the community through the Master Gardener program.

Looking forward, it is apparent that we will need to increase our outreach to inform the general public about our telephone hotlines as we've had fewer inquiries than we would like this gardening season. Many suggestions have been made and here are a couple of concrete steps that we are taking to further inform the public about our service:

- Establish a presence at the King Farmers' Market in NE Portland on Sundays to specifically refer clients to the new telephone clinic in NW Portland.
- Distribute ¼ sheet flyers in mass promoting all three of the Master Gardener Hotlines in the metro area through Portland Zoo, farmers' market clinics, garden centers, grocery stores, etc.
- Investigate various media and in-person marketing opportunities.

Jordis and I have caught our breath after the intense Master Gardener training season and we have read all of the evaluations of the 2009 training. In the next month, we will be making plans for the following:

- Fall Recertification to be held November 7, 2009
- 2010 Master Gardener Training in Clackamas, Multnomah, and Washington Counties.

Stay tuned for more details about our upcoming educational programs.

I look forward to learning from my garden(s) this summer. I hope you do too!

Be well,

Weston

## OPPORTUNITIES FROM JORDIS

503-650-3118 or [Jordis.Yost@oregonstate.edu](mailto:Jordis.Yost@oregonstate.edu)



### **IT'S JUNE ALREADY!**

I must be having fun, because time is really flying by. It is almost halfway into the volunteer year and the class of 2009 should be well into the process of finding events to participate in for volunteer time. Activities will really pick up this month, so there should be lots of opportunities to get a few hours in here and there. Don't wait until the garden season slows down or you will get frustrated in finding things to do. I'll share a few ideas here and will also send email messages periodically with events and ideas.

### **DEMONSTRATION GARDENS**

There are several demonstration sites scattered throughout the metro area where MGs can volunteer and really make a difference. The class of 2009 has a 6 hour requirement in these gardens and MGs can use the following information to get plugged in.

#### Clackamas Co.

- Oregon Trail Interpretive Center – Jean Erickson 503-636-3967  
1726 Washington St bjeanerickson@msn.com  
Oregon City OR 97045  
(covered wagon building in Oregon City)
- Hopkins Demonstration Forest - Tim Delano 503-632-2150  
16750 S. Brockway Rd.  
Oregon City OR 97045  
<http://www.demonstrationforest.org>

#### Multnomah Co.

- Multnomah Co. Chapter Demonstration Garden Site - Jean Edmison 503-771-2486  
6801 SE 60<sup>th</sup> Ave  
Portland OR 97206  
(on SE 60<sup>th</sup>, between Duke and Flavel)

#### Washington Co.

- MG Demo Garden @ Washington Co. Fairplex - Joanne DeHaan 503-649-1683  
873 NE 34<sup>th</sup> Ave  
Hillsboro OR 97124  
(Washington Co. Fairgrounds)
- Washington County Extension Office Garden - Verleen Fletcher 503-643-9543  
18640 NW Walker Rd. #1400  
Beaverton OR 97006

## **CRYSTAL SPRINGS RHODIE GARDEN**

There is no more beautiful place than CSRG (28<sup>th</sup> and SE Woodstock) in the summer. If you are not up to working in the gardens on Wednesdays and Saturdays (if you are, call Linda O'Toole 503-659-5309...it's a great place to be) you can also work in the beautiful little gatehouse welcoming visitors in the comfort of a chair and some shade. Perfect for limited mobility MGs. **Call Rose Kress 503-654-4318**

## **1860's KITCHEN GARDEN – CHAMPOEG STATE HERITAGE AREA**

This is a lovely hands-on garden that also provides a lot of education for the many visitors that arrive at this Oregon State Park. Master Gardener Marie Van Patten is also a seasonal ranger and oversees the incredible volunteer work days. Marie asks that you contact her first so she can schedule the work parties.

**Contact Marie at 503-678-1251 x223**



### **COORDINATORS NEEDED**

My job has been made easier by the hard work that the many coordinators contribute every year. Having a multitude of coordinators and dividing the job into many segments is how we are able to reach into the community with such impact. This is only possible because of the fabulous collection of MG coordinators.

Occasionally a coordinator position opens up and we offer the 'job' to an MG that likes to do their volunteer doing phone work and some organizing. If this appeals to you...check out these possibilities.

**Beaverton Farmers Market** – Barbara Watson has done this for at least 20 years (or close to it) and has been a dream volunteer. I have really enjoyed working with Barbara and wish her the best as she moves on to her next adventure. Thanks Barbara!

- So that means that we will need a 2010 coordinator for this bustling market. If you have good organizational skills and can put in a few days during the summer at the market...give Jordis a call or email.

**Oregon State Fair** – Belinda Reagan has coordinated this clinic for a long time as well, and would like to pass the baton to another organized MG. Many thanks go to Belinda for her many years of generous dedication to this fun MG event.

- The dates for the 2009 Oregon State Fair in Salem are Aug 28<sup>th</sup> – Sept 7. MGs from all over the state staff a clinic booth there, but the metro program will be there Friday, September 4 through Sunday, September 6.

### **Multnomah County Speakers Bureau Coordinator**

- Now that MGs are back in Multnomah County, we have received a number of requests for MGs to come and speak at events in that county. We have active coordinators in Clackamas and Washington Counties, but need to close the loop and have someone coordinate the requests from Multnomah County.

I usually get the calls, refer the caller to the coordinator who then matches the request with a list of MGs that indicated an interest in certain subject areas. It is done from home and a perfect fit for those who wish to stay close to home. I have an interested MG, but they would like a co-coordinator. Call or email Jordis.

### **Berry projects at North Willamette Research and Extension Center in Wilsonville**

- There are possibilities for MGs to work in some capacity at this research farm during berry season. I am looking for someone to help coordinate this. Let me know if you are interested.



## Natter's Notes

### Maladies and Munchers

Jean R. Natter

Spring has finally sprung and so, too, have multiple plant miseries. The exciting part of that news is that this year may well provide many opportunities for Master Gardeners to hone their diagnostic skills!

So, with that in mind, let's take a look at a number of challenges large-scale growers have already detected in their crops and that likely are also active in home gardens, although in low numbers.

More than likely you've heard it said that by the time gardeners bring their problems to our attention, it's too late to do anything. That's especially so with plant diseases, where it's critical to be proactive rather than reactive.

MGs often see problems when they're full-blown – an army of aphids, a plant nearly dead from disease, or weeds which are either waist-high or already casting their seeds to the four winds.

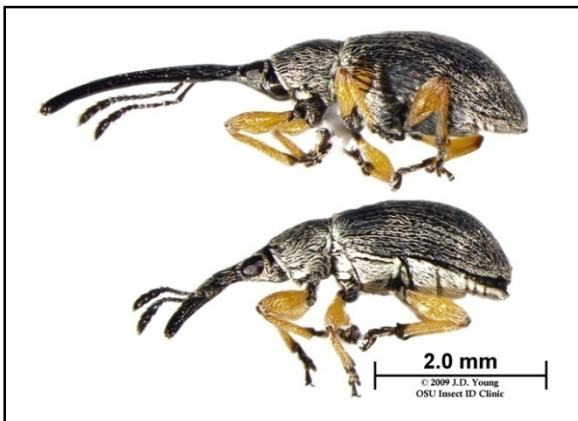


Figure 1: Hollyhock weevils, female (top) and male (bottom). Jim Young, OSU Plant Clinic

In case you're wondering why the delay, it's like this. Professional growers regularly monitor their plants, beginning from the very earliest stages.

Consequently, they detect critical signs and symptoms very early in the game. Many home gardeners, though, take a more causal approach and seemingly wait for problems to jump out at them.

Twice during the past month, **spittlebugs**, *Philaenus spumarius*, have been reported.. As you likely know, these little fellows feed on various herbaceous plants while hiding in a small blob of bubbles which appears for all the world like spit. At my place, these pests now occur rarely since I took out the several lavenders they seemed to favor.

Damage is often minor. You know; the ugliness of spit-festooned branches. But now and then, the beasts would on a flowering stem, causing it to buckle at the feeding site, then shrivel beyond that. You'll find images of distortion on mums and penstemon, also links to further information, at <http://oregonstate.edu/dept/nurspest/spittlebugs.htm>.

**Hollyhock weevils**, (*Apion longirostre*) are very tiny critters which specialize on.... (Well, heck. You can figure that one out! Right?)

These tiny weevils have elongated snouts, so are well equipped to damage hollyhock flower buds. (See Figure 1) The males make small holes in new leaves whereas the females tend to specialize on the buds where they drill into the interior, then lay their eggs inside the ovules.

The adults overwinter around hollyhock plantings or in the seeds, the latter explaining why saved seeds might have “bugs” come spring. During the season, I particularly enjoy flicking dozens of their teensy bodies into slightly soapy water.

For images, also an informative link, go to <http://oregonstate.edu/dept/nurspest/hollyhock%20weevil.htm>.

In home gardens, leaf damage from **rose slug** is recognized more often than the small greenish critters which cause it. Damage in home gardens is often minimal and typically unnoticed until the critters are long gone. (See Figure 2, also <http://oregonstate.edu/dept/nurspest/roslug.htm>)



Figure 2: Damage from rose slug

Both the rose slug, *Endelomyia aethiops*, and the bristly rose slug, *Cladius difformis*, are sawflies. Thus, they are Hymenoptera rather than Lepidoptera. To differentiate the two orders, examine the prolegs. A 10x loupe should help you see that the prolegs of these “slugs” exceed five pair. But you may need the office microscope to verify the absence of crochets (tiny eyelash-like hooks) present on caterpillar prolegs.

When it comes down to managing these fellows, it doesn't matter which one is at hand.

**Cutworms** plague commercial growers just as they do home gardeners. The first image at <http://oregonstate.edu/dept/nurspest/cutworms.htm> clearly displays the tiny scallops these caterpillars make as they eat leaves.

And if you've wondered what chomped horrendously large holes in your rhubarb the past few years, perhaps it's the **large yellow underwing**, *Noctua pronuba*, the caterpillar I've written about in each of the past several newsletters. It's technically not a cutworm but is so dubbed because of its habit of curling into a C-shape when disturbed. One of our eagle-eyed MGs caught the culprit in action. (See Figures 3 and 4; Photos: Rikki Nyman)



**Figure 3: Rhubarb damage from large yellow underwing**

These particular caterpillars overwinter as immatures, and will come out for lunch during mild spells. At my place, I found a half-grown larva in January. (It gave its life for science and now will do service in the hands-on exercise during our annual Entomology training!)



**Figure 4: Caterpillar of the large yellow underwing**

In late April or early May, these voracious caterpillars begin feeding on my favorite springtime plants, among them *Camassia* and Pacific Coast iris. There, they specialize in the flower buds and will also feed mid-way on the flower stem, toppling it before the buds open. Later in the season, I can find them curled up in depressions they've carved in peony buds.

Symptoms of **apple scab**, *Venturia inaequalis*, are already present on susceptible crabapple leaves. These early lesions are pale, pinhead-sized spots which are chlorotic and water-soaked.

Those symptoms are dramatically different than what we see when samples are brought into the office later in the season. Then, the lesions are larger, have a smoky brown or purplish-brown color, and may be slightly raised. The crusty scabs on the fruit surface can, if extensive, distort the apple markedly.

The *PNW Disease Management Handbook* has images and text about scab on crabapples at <http://plant-disease.ippc.orst.edu/disease.cfm?Reco rdID=364> and on apples at <http://plant-disease.ippc.orst.edu/disease.cfm?Reco rdID=55>. More images are at <http://www.agf.gov.bc.ca/cropprot/tfipm/applescb.htm>.

**Rose midge**, *Dasineura rhodophaga*, is a relatively new pest in our region but one that's not yet in home gardens with a modest number of roses. Even so, it's wise to know what the critter and its damage look like as it may well end up bugging home-grown roses.

This petite pest, a fly maggot easily seen with a 10x loupe, was first sighted in large-scale plantings this year at the end of April. For information and high quality images, go to [http://oregonstate.edu/dept/nurspest/rose\\_midge.htm](http://oregonstate.edu/dept/nurspest/rose_midge.htm). Notice that the points of attack are the unfolding leaf and flower buds, resulting in stems without flowers.



## HORTICULTURAL CALENDAR IN THE METRO AREA

<b>June 4</b>	Washington County Chapter – New Plants for 2009, Mary Ludlum, Farmington Gardens
<b>June 4-5</b>	Portland Rose Society's 120 <sup>th</sup> Annual Rose Show-Lloyd Center; see PRS website for details ( <a href="http://www.portlandrosesociety.org">www.portlandrosesociety.org</a> )
<b>June 5</b>	Gardens in Senior Living Seminar
<b>June 7</b>	Portland's Best Rose Trials – Washington Park, International Rose Test Garden
<b>June 8</b>	Clackamas County Chapter-Josh Kirschenbaum, Product Development Director, Territorial Seed Company – Winter Vegetable Gardening
<b>June 9</b>	Multnomah County Chapter 7pm Speaker Weston Miller, OSU Extension Community and Urban Horticulture Faculty, Year Round Intensive Gardening: Focus on Winter Veggies.
<b>June 13</b>	Metro Garden Tour – Gresham area.
<b>June 26 &amp; 27</b>	Oregon Coast Gardening and Landscaping Expo.
<b>June 27</b>	Washington County Garden Tour
<b>June 28</b>	Metro Garden Tour – Oregon City area.
<b>July 9</b>	MG Computer Classes – See information further in this issue
<b>July 13</b>	Clackamas Garden Tour – Schmidt Arboretum, Boring
<b>July 19</b>	Metro Garden Tour – Lake Oswego area.
<b>Aug 5-8</b>	26 <sup>th</sup> Annual Master Gardeners Mini-College
<b>August 29,30,31 and September 5,6,7</b>	2009 Annual Dahlia Festival, Swan Island Dahlias, Canby
<b>Sept 3</b>	Washington County Chapter – Rethinking Your Personal Garden Style, Charlotte Klee
<b>Sept 8</b>	Multnomah County Chapter 7pm Speaker Lisa Albert, garden writer, Native Plants, Garden Gems
<b>Sept 26</b>	Multnomah Chapter Fall Plant Sale
<b>Oct 3</b>	MG Computer Class
<b>Nov 14</b>	MG Computer Class

Master Gardeners have been requested to be room monitors at the Seminars for the Far West Show, the trade show for the Oregon Association of Nurseries.

The Far West Show is in the Oregon Convention Center, 777 NE Martin Luther King Jr. Blvd, Portland. Your shift hours are 8:30 to 12:00. Four people are needed Thursday, August 20; five people are needed on Friday, August 21; and four people are needed on Saturday, August 22.

Please call (503 246 7983) or email Carol Barrett at [alderx@q.com](mailto:alderx@q.com) before July 3<sup>rd</sup> indicating your day preference and leaving contact information.

After confirmation, additional information will be sent in early August.





### **Farmers Market MG Clinic in the City!**

We will be staffing a Farmers Market MG Clinic in Portland this summer. Yahoo! We are waiting on official word concerning location and times. In the meantime we need to build a strong volunteer pool of MGs (veteran and interns) interested in staffing MG Clinics in Portland.

We are also interested in a couple of MGs who would be willing to coordinate the clinics in Portland. The coordinator is responsible for scheduling the shifts and reminding MGs of their shift times.

If you are interested please e-mail Jordis, [jordis.yost@oregonstate.edu](mailto:jordis.yost@oregonstate.edu) Indicate days you would be available (i.e. weekday evenings, Saturday or Sunday) and if you would be interested serving as a clinic coordinator.

### **Kudos to a generous lot!**

Thank you to all who so generously donated books and funds to the Multnomah County Phone Clinic Library. The library is in the process of taking shape. Quite nicely in fact, thanks to all of you!

Our special thanks go out to Paula Corbridge who jumped right in and volunteered to serve as librarian for the office. Paula is busy ordering, labeling, cataloging and organizing the book collection. Thanks Paula!

If you are interested, it is not too late to contribute to the library fund. Please contact Paula Corbridge @ [paula.corbridge@gmail.com](mailto:paula.corbridge@gmail.com) or (503)705-6949

### **WHAT: SEEDING OUR FUTURE GARDEN TOUR & ART SHOW**

Tour 6 private gardens located throughout Tigard, Tualatin and Sherwood including Bella Madrona, a 5-acre, art-filled, collector's garden featured in homes+gardens northwest and Country Living Gardener; and the inspiration for Pink Martini's song "The Gardens of Sampson and Beasley".

Special guests in the gardens include Kym Pokorny, garden writer for the Oregonian, Miriam Bock, landscape designer with Winterbloom, Paul Taylor, OCNP Garden Design & Consultation, and representatives from Prescott Bluebird Recovery Project. Throughout the day 10-Minute UniversityT, an OSU Extension Service Master Gardener program that provides free classes on gardening, will be presented in the Southern Charmer garden.

Shop the Garden Art Show with over 50 Northwest artists selling garden or garden inspired art.

WHEN: ART SHOW Friday, June 26, 2009, 5-8pm  
Saturday, June 27, 2009, 9am to 5pm  
GARDEN TOUR Saturday, June 27, 2009, 10am to 4pm

ART SHOW LOCATION: Tigard High School, 9000 SW Durham Rd., Tigard, Oregon 97224. Art Show admission is free.

GARDEN TOUR TICKETS: \$20.00 each; Available at Al's Garden Center, Ferguson's Fragrant Nursery, Gardener's Choice, Hughes Water Gardens, McCann's Pharmacy, The Garden Corner, Tigard High School, Tualatin High School, Foundation office or online at [www.foundation4smartkids.org/art](http://www.foundation4smartkids.org/art)

ADDITIONAL INFORMATION: [www.foundation4smartkids.org/art](http://www.foundation4smartkids.org/art) or call 503-431-4024. A preview of the gardens is available online.

BENEFITS: The Foundation for Tigard Tualatin Schools, a nonprofit organization whose mission is to expand the possibilities for learning for all students in our district schools.

SPONSOR: THE TIMES

## Internet Essentials for Master Gardeners

Want to learn more about using computers in the MG offices?  
Want to increase your skills in online research? Here's your chance.

Join MGs Jean Natter, Jan Breckon, and Janette Barbour in computer training designed to increase your knowledge and skills in MG-related research using internet technology.

Date	Site	9 to noon	1 to 4 PM
July 9	Liberty High School*	Beginning basics for MGs	Intermediate (same class as in October 2008)
October 3	Clackamas Community College**	Intermediate (same class as in October 2008)	The Next Step (More web sites; effective searches)
November 14	To be announced	Intermediate (same class as in October 2008)	The Next Step (More web sites; effective searches)

\* Liberty High School: 21945 NW Wagon Way; Hillsboro 97124

\*\* Clackamas Community College: 19600 Molalla Avenue, Oregon City 97045

### All classes are hands-on

- **Beginning basics** will include using a mouse; menus; web browsers; web address (URL); Favorites; the Metro MG page; Google search; & help for Mac users.
- **Intermediate class** is the same as given in October 2008; it will explore the majority of links from the OSU Garden Encyclopedia website.
- **The Next Step** will cover more websites for MGs & search techniques.

**\*\*\* You will have your own computer \*\*\***

**Class size is limited!  
Pre-register now!**

**\*\*\* No charge for active Metro MGs, but donations are welcome \*\*\***

**Contact** Jean Natter ([jnatter@aol.com](mailto:jnatter@aol.com) or 503-645-7073)

Please provide the following information:

1. Your name, plus phone number or email address
2. Date & time of class(es) you will attend
3. What is your computer, a PC or Mac?



**\*\*\* Computer training sponsored by the Metro Master Gardener Program \*\*\***



# Clackamas County Chatter



**June 2009** A chapter newsletter for the Oregon Master Gardener Association in cooperation with OSU Extension Service Master Gardener™ Program

## June Chapter Meeting

**Monday, June 8, 7 p.m.**

Milwaukie Center

5440 SE Kellogg Creek Drive,  
Milwaukie

## Winter Vegetable Gardening

Josh Kirschenbaum, Territorial Seed

The average distance that supermarket-bound produce travels is 800 to 1,500 miles. Home-grown produce travels mere feet and takes just minutes. With the price of goods on the rise and significant awareness about where our food comes from and what is on it or in it, the movement to home-gardening makes perfect sense. The Victory Garden has returned and with it an increased interest and demand for winter harvests.

Josh Kirschenbaum, Product Development Director at Territorial Seed Company, conducts the yearly trials at Territorial's 44-acre certified organic farm just south of Cottage Grove. Josh will share his knowledge of winter vegetables including best varieties for our region and tips on planting, growing, and extending the harvest



May Green Glove

Award went to

**JOBY DUGGAN** for

outstanding work as  
the Phone Clinic

Coordinator and **SGF**

**VENDOR SALES CHAIR**

*Thank you Joby!*

## Upcoming Events

### June Chapter Meeting

Tool Sharpening returns!

### July Garden Tour

**Monday, July 13, 4-7 p.m.**

Schmidt Arboretum

9500 327th Ave, Boring

The Frank J Schmidt Arboretum is home to more than 500 species and cultivars of deciduous trees and shrubs. The private collection is usually open only to professionals, but on this evening we can stroll at our leisure or join one of the 3 evening tours: 4:15, 5:15 and 6:15. Light refreshments will be available.

Several near-by establishments such as Flat Creek Garden Center and Red Pig Tools will remain open. More info and maps will at June 8th meeting.

### Annual Picnic Potluck

**Monday, August 10, 6 p.m.**

Milwaukie Center picnic shelter

Tool Sharpening returns!

### 2009 Open Gardens

6-14	12-5	Madeline Forsythe
6-20	10-4	Dot Carson
		6049 Meridian Way Tualatin
6-20	3-8	Holly Pederson
6-27	10-4	Bee Smith
	10-4	Shirley Henderson
	10-4	Meredith Hilderbrand
6-28	10-4	Bee Smith
	10-4	Shirley Henderson
	10-4	Meredith Hilderbrand

## Spring Garden Fair Update

In two days, 16,183 people filed through the gates -- 585 in the first 10 minutes -- most in heavy, rain, hail, and WIND that destroyed many tents. Rodger Sanman, blind-sided by a speaker falling in the high winds, escaped with only scrapes and bumps.

The FOOD approach was totally different to relieve the amount of volunteers needed. An outside vendor was contracted and did a great job of satisfying the hungry.

Soil Testing had 146 people bring in 339 samples, up from 112 people and 288 samples in 2008.

10-MINUTE UNIVERSITY™ attendance was up 37% over last year with 305 people attending. Presentations were extended to 15 minutes in response to evaluation of last year's audience

Leah Lane on the VOLUNTEER SIGNUP committee needs help from someone who can attend chapter meetings in Multnomah and Washington counties, as well as training sessions, and be the cheerleader.

SGF 2010 planning meetings will be held on the 3rd Wednesday of the month starting in September at the Oregon City Extensions Office.

*Rodger Sanman*

*Please bring to our June meeting donations for OMGA mini-college silent auction in August.*

## Clackamas County Chapter Officers

President	<b>Bill Bradley</b>	503-624-8435	Advisory Board	<b>John Hill</b>	503-653-9524
Vice President	<b>Rick Mishaga</b>	503-557-4491		<b>Dale Eggers</b>	503-557-3152
Secretary	<b>Cheryl Borden</b>	503-723-4257		<b>Martha Waldemar</b>	503-698-2519
Treasurer	<b>Mary Butler</b>	503-632-1532	Newsletter	<b>Holly Pederson</b>	503-701-5816
Asst. Treasurer	<b>Trudy O'Donnell</b>	503-636-1697	Websites	<a href="http://extension.oregonstate.edu/mg/metro/">http://extension.oregonstate.edu/mg/metro/</a>	
OMGA Rep	<b>Denise Dwan</b>	503-632-3035		<a href="http://www.clackamascountymastergardeners.org/">http://www.clackamascountymastergardeners.org/</a>	
OMGA Alternate Rep	<b>Nikki Mantei</b>	503 577-4494			



# Washington County Chapter Chat

Oregon Master Gardener™ Association in cooperation with

OSU Extension Service Master Gardener™ Program

Chapter Website: [www.wcmga.info](http://www.wcmga.info)

## UPCOMING PROGRAMS –

MARK YOUR CALENDAR

**SOCIAL GATHERING at 6:30 pm**

**June 4th, 6:45 pm Chapter Meeting:** “*New Plants for 2009*” Mary Ludlum, Farmington Gardens

**Sep. 3, 2009 “Rethinking Your Personal Garden Style”** Charlotte Klee

**Presentations are from 7:15 - 8:15 p.m.** at the CAPITAL Center, 18640 NW Walker Rd (185<sup>th</sup> & Walker Rd) Rm 1411. The public is welcome.

## Thank You To All For Raffle Participation!

The Raffle that was held in conjunction with the Plant Sale was very successful thanks to all of you who donated items, cash and/or purchased raffle tickets. Special thanks to Verleen Fletcher who helped with set-up and sales, Diana Gaydon and Anna Stubbs who helped with set-up, and Donna Yount who helped with sales. I could not have done this without all of your help and we had fun.

*Barbara Knopp, Raffle Chairperson*

## Washington County Chapter Potluck Picnic

**Where:** The Millers – 17745 SW Cooper Mountain Lane

**When:** Saturday July 18<sup>th</sup>, 3:00 – 6:00 pm

**We will eat at 3:30 sharp!**

“**Beer Brats ‘n Bluegrass**” – Eating ware & brats provided. Bring food to share – enough to serve approximately 10-12 people. *Jane Miller*

## Washington County Master Gardeners 2009 Garden Tour

**Saturday, June 27<sup>th</sup> – 10 AM – 4 PM**

Washington County Master Gardeners invite you to enjoy a free self-guided tour of 5 home gardens, a community garden, and a school garden; all in Washington County. The tour will showcase sustainable gardening practices for edibles and ornamentals, with an emphasis on home food growing. You'll see beautiful ponds, a large cutting garden, unusual shrubs and perennials, fruit trees, a 4-season vegetable garden, charming chickens and more. Master gardeners will be on hand to answer your questions. Our brochure with garden descriptions and driving directions can be found at area nurseries and on our website at <http://www.wcmga.info/>; click on the “events” link. For more information call 503-821

## Very Successful Plant Sale

Net proceeds were **\$9.802**. Plants \$8,764, raffle \$622, bare root \$456 & vendors \$150. **Thanks to all who contributed plants, time & talent.** *Jane Miller & Committee*

President	Ken Keudell	503-292-6519
Vice President	Lynn Cox	503-629-9156
Recording Secretary	Jackie Keil	503-531-3884
Corresponding Secretary	Gini Lang	503-407-6422
Treasurer	Donna Yount	503-746-6198
OMGA Rep	David Rullman	503-292-1603
Alternate Rep	Jerry Knott	503-292-1939
Dir.#1 Business	Bill Klug	503-681-0143
Dir.#2 Program	Alan Strong	503-690-1882
Dir.#3 Publicity	Lynn Wagner	503-531-9239
Dir.#4 Fundraising	Anna Stubbs	503-643-9474
Dir.#5 Chapter Relations	Barbara Knopp	503-641-0429
Editor:	Gini Lang	503-407-6422

Submit Chapter Chat Announcements to **Gini Lang**, Chapter Chat Editor, by the 11<sup>th</sup> each month. Phone **503-407-6422** or e-mail **Gini Lang [lang2044@comcast.net]**.

Submit general chapter announcements to Cathy Mankus, e-mail coordinator,  
[cathy@cathymankus.com](mailto:cathy@cathymankus.com)

Chapter Website: [www.wcmga.info](http://www.wcmga.info)





MULTNOMAH CHAPTER GRAPEVINE  
Oregon Master Gardener™ Association in cooperation with  
OSU Extension Service Master Gardener™ Program  
4742 SE 39<sup>th</sup> Ave. Portland, OR 97206

**12 May, 2009 Chapter Meeting**

Mt. Tabor Presbyterian Church  
5441 SE Belmont  
(Parking on the west side)

**6:45pm Gather**

**6:50 pm – Announcements**

**7:00 pm - Year-round, Intensive Vegetable Gardening: Focus on Winter Veggies**  
**Speaker: Our very own Weston Miller, OSU Community and Urban Horticulturist**

Do you want to have veggies year-round? With our relatively mild climate in the Willamette Valley, it is possible to harvest fresh veggies from the garden all year round. Harvesting veggies in the winter takes lots of planning and some special tools and techniques. The time to plan is now (June) and the time to plant is July. So, come learn how you can enjoy veggies from the winter garden.

Weston Miller is OSU Extension Community and Urban Horticulture Faculty for the tri-county Portland metro region. He has been on the job since July 2007 and is both proud and honored to serve as manager of the Master Gardener program and as horticultural representative for OSU in the metro area.

**\*\*\*Summer is scheduled for July and August.**

There will be no chapter meetings. Hope to see everyone in September or before. Enjoy the gardening and hopefully whatever activities you are participating in.

**\*\*\*Next Board Meeting – Tuesday 2 June 2009 - 6:30 pm at Jean Edmison's home – 7606 S.E. Ellis**

**\*\*\*15 May 2009 is the deadline for Scholarship Applications.** Contact Barbara Beck for info.

**\*\*\*We are very much in need of historical information on the Multnomah Chapter's 2008 year, in addition to January/February/March 2009.** Could you please bring to our meeting photos, clippings, etc. of any Multnomah Chapter event or related activity you, as a Master Gardener, were

involved in, during 2008. There will be a box on the Hospitality Table for this purpose. Contact Velda Altig for more information. (Also, please continue to bring digital photos of Master Gardeners and gardening to the meetings.)

**\*\*\*Demo Garden** – The schedule is Thursdays from 9am to about noon or the second Saturday of the month. Another way to help would be to save seeds. Questions should be directed to Jean or Sharon.

**\*\*\*When you start digging this spring, please remember to **save plants** for the **Fall Plant Sale** on **26<sup>th</sup> September 2009**.** Call Joyce Hemmerling with any questions.

**\*\*\*Our chapter needs more used garden books to sell at the Canby Spring Fair.** Please bring your unwanted ones to the meetings or contact Sharon Baker for any other arrangements. Her numbers are 503-284-5189 or [gazebo@teleport.com](mailto:gazebo@teleport.com). Please do not bring magazines.

**\*\*\*We have an office with phones in Multnomah County!** –The office is in Montgomery Park @ NW 27<sup>th</sup> and Vaughn. Gloria Bennett 503-775-4005 or [dcleopatra@comcast.net](mailto:dcleopatra@comcast.net) is managing the calendar. The phone hours are 10am-2pm Monday to Friday. Two to four hour shifts.

**2009 Officers**

President – Jean Edmison - 503-771-2486  
Vice President – Sharon Baker - 503-284-5189  
Secretary – Jo Ann Bones – 503-253-3168  
Treasurer – Robin Case – 503-762-3964  
Past President – Patrick Adams – 503-287-9071  
OMGA Sr. Rep. – Joyce Hemmerling - 503-331-0824  
OMGA Rep. – Marilyn Kongsliie – 503-289-8889  
Historians – Velda Altig, Claudia Groth and Jim Colahan  
Grapevine – Lorna Schilling – 503-334-5162

# June 2009

## Garden hints from your OSU Extension Agent

- First week: spray cherry trees for cherry fruit fly and brown rot if fruit is ripening.
- First week: spray for codling moth and scab in apple and pear trees. Continue use of pheromone traps for insect pest detection.
- Apples and crabapples that are susceptible to scab disease will begin dropping leaves as weather warms. Rake and destroy fallen leaves; spray with summer-strength lime sulfur, wettable sulfur, Immunox, or Captan.
- Learn to identify beneficial insects, and plant some insectary plants (Alyssum, Phacelia, coriander, candytuft, sunflower, yarrow, dill) to attract them to your garden. Check with local nurseries for best selections.
- Lawn mowing: set blade at 0.75 to 1 inch for bentgrass lawns; 1.5 to 2.5 inches for bluegrasses, fine fescues, and ryegrasses.
- Spray with Orthene to control adult root weevils in rhododendrons, azaleas, primroses, and other ornamentals. Or, use beneficial nematodes if soil temperature is above 55°F.
- Remove seed pods after blooms have dropped from rhododendrons, azaleas.
- Prune lilacs, forsythia, rhododendrons, and azaleas after blooming.
- Harvest thinnings from new plantings of lettuce, onion, and chard.
- Construct trellises for tomatoes, cucumbers, pole beans, and vining ornamentals.
- Use organic mulches to conserve soil moisture. An inch or two of sawdust, barkdust, or composted leaves will minimize loss of water through evaporation.
- Pick ripe strawberries regularly to avoid fruit-rotting diseases.
- Blossoms on squash and cucumbers begin to drop: nothing to worry about.
- Control aphids on vegetables as needed by hosing off with water or using insecticidal soap or a registered insecticide.
- Watch for cabbage worms, 12-spotted beetles on beans and lettuce, flea beetles in lettuce. Remove the insect pests or treat with labeled pesticides.
- Spray peas as first pods form, if necessary, to control weevils.
- Late this month, begin to monitor for late blight on tomatoes.
- Last week: second spray for codling moth and scab in apple and pear trees.
- Birch trees dripping means aphids are present. Control as needed.
- After normal fruit drop in June, consider thinning the remainder to produce a larger crop.
- Control weeds by pulling, hoeing, or mulching.
- If indicated, spray cherries at weekly intervals for fruit fly.
- Fertilize vegetable garden 1 month after plants emerge by side-dressing alongside the rows.
- Move houseplants outside for cleaning, grooming, repotting, and summer growth.
- Make sure raised beds receive enough water for plants to stay free of drought stress.
- *High elevations, central and eastern Oregon:* fertilize lawns, late June to early July.
- *Western Oregon:* apply fertilizer to lawns.
- *Western Oregon:* plant sweet corn, other tender vegetables.
- *Oregon coast:* plant cauliflower, broccoli, cabbage, kale.

Oregon State University Extension Service encourages sustainable gardening practices. Always identify and monitor problems before acting. First consider cultural controls; then physical, biological, and chemical controls (which include insecticidal soaps, horticultural oils, botanical insecticides, organic and synthetic pesticides). Always consider the least toxic approach first.

All recommendations in this calendar are not necessarily applicable to all areas of Oregon. For more information, contact your local office of the OSU Extension Service.

Trade-name products and services are mentioned as illustrations only. This does not mean that the Oregon State University Extension Service endorses these products and services or intends to discriminate against products and services not mentioned.

**Oregon State** | **Extension**  
**UNIVERSITY** | **Service**

Gardening information online—<http://extension.oregonstate.edu/gardening>

