

Metro Master Gardener™ News

April 2012



OSU Extension Service Metro Master Gardener™ Program

Serving [Clackamas](#), [Multnomah](#), and [Washington](#) Counties in the metro area since 1976.

Mission Statement

We provide relevant, research-based education and outreach to the public of Clackamas, Multnomah, and Washington Counties about horticulture and household pests. This information promotes sustainable practices that minimize risks to human health and the environment.

Program Staff

Weston Miller- Horticulture Faculty
weston.miller@oregonstate.edu
(503) 650-3124

Jordis Yost- Program Coordinator
jordis.yost@oregonstate.edu
(503) 650-3118

Margaret Bayne-Urban Hort. Specialist
margaret.bayne@oregonstate.edu
(503) 650-3126

Newsletter Volunteers

Ellen Hanley- Volunteer Editor
ellenpoppy@aol.com

Heidi Nichols- Proof Reader
heidinichols@comcast.net

Mailing Address

Clackamas County Extension Service
200 Warner-Milne Rd.
Oregon City, OR 97045



Art by Megan Jamieson

Table of Contents

	<u>Page</u>
Update from Weston Miller	2
Opportunities from Jordis	4
Natter's Notes— Seeds and Seedlings	5
Internet Essentials for Master Gardeners	7
Master Gardeners Making a Difference	8
It's time for spring cleaning in the garden	9
MG Interest Group	9
Tualatin Basin Weed Watchers Workshop	10
Notices	11
Horticultural Calendar	12
Multnomah County Chapter Page	13
Washington County Chapter Page	14
Clackamas County Chapter Page	15
Monthly To Do	16

Dear Master Gardeners,



The 2012 Master Gardener training ended in mid-March and we are catching our breath after the major effort needed to conduct the training. We (the Master Gardener program office consisting of Weston, Jordis, and Margaret) are very grateful for all of the time and energy that the MG community contribute toward the training. We are especially grateful to the team of class coordinators who provide an extraordinary service by hosting the MG training in Beaverton, Oregon City, and Portland. THANK YOU to all who helped to make the training happen from behind the scenes.

For new 2012 Master Gardener trainees, we'd like to thank you for joining us and we look forward to ensuring that you have a smooth and fun volunteer experience. Please contact Jordis or me with any questions, comments, concerns, and appreciations. We do not know what is working and what is not working about our volunteer program without input from YOU, so please do not hesitate to let us know how your volunteer experience is going.

As a follow up to my newsletter entry in March, several MGs pointed out that some of the links on the OSU Extension Service website in Columbia County that I directed folks toward were broken. Thus, I'd like to provide the correct links to great information from OSU including the following on small fruits:

- [Growing Blueberries in Your Home Garden](#)
- [Growing Blackberries in Your Home Garden](#)
- [Growing Raspberries in Your Home Garden](#)
- [Growing Grapes in Your Home Garden](#)
- [Growing Strawberries in Your Home Garden](#)
- [Growing Currants and Gooseberries in Your Home Garden](#)
- [Growing Kiwi Fruit](#)

In addition to your [Sustainable Gardening](#) book, OSU has a wealth of resources on a wide range of gardening topics. Check out OSU's [gardening publications catalog](#).

Research-based information for service as Master Gardener

As you're working to solve plant problem cases, here are some great resources to get you going in the right direction:

Oregon State University resources

[Plant Disease](#) Guide to plant diseases in the Pacific Northwest with recommendations for management. Make sure to give only recommendations with an "H" symbol to clients.

[Insects](#) Guide to arthropod pests of plants in the Pacific Northwest with recommendations for management. Please use only the "Home Garden, Orchard, landscape, and Lawn Pests" and "Structural and Health Pests" sections.

[Weeds](#) Guide to managing weeds in the Pacific Northwest. Please use only the "Management- Home Gardens and Landscapes" section. Includes a new [Weed Identification Tool](#).

[Landscape Plants: Images, Identification, and Information](#) An incredible resource to learn about common landscape plants in Oregon and beyond.

[OSU Plant Clinic](#) This resource has a wealth of information for use by Master Gardeners including:

[Diagnosis by County](#) in Oregon
[Common Natural Enemies of Crop and Garden Pests](#)

[Urban Entomology](#) This site has information on common household and health pests in Oregon.

[Methods of Moss Control](#) An excellent resource about how to control moss in trees and shrubs, lawns, and on decks, sidewalks, etc. Emphasis on physical methods and least-toxic chemical treatment.

[Nursery IPM](#) An excellent entomological resource.

[Ken Gray Insect Image Collection](#) Search for images of insects by scientific name.

Washington State University resources

[HortSense](#) is a good place to look to help solve plant problems.

[Yard/Garden Pests](#) Great resources on beneficials, pests, and control measures.

[House Pests](#) Specific information on household pests including carpenter ants.

[Pest Leaflet Series](#) A series of bulletins on common issues that come up though WSU has a wealth of information on a variety of important topics for Master Gardeners.

[Master Gardener Resources](#) Good information for Master Gardeners from our Extension neighbors to the north.

University of California IPM

[Pests in Homes, Gardens, Landscapes, and Turf](#) This is a well-organized and easy to use resource with incredible depth. Much of the content is applicable to Oregon.

Other resources worth checking out

[Organic Garden Weed Management](#) from Cornell University. Comprehensive website from Cornell University on managing garden weeds without chemicals.

[ATTRA](#) A sustainable agriculture information center that provides technical assistance to farmers, market gardeners and extension agents on farming topics.

[eOrganic](#) Great information on organic farming from the nationwide network of extension services in the US.

I hope that you find these resources useful.

All the best,

Weson

OPPORTUNITIES FROM JORDIS

503-650-3118 Jordis.Yost@oregonstate.edu

SPRING NEWS



This is a busy time of the year for OSU Extension Service Master Gardeners. We are staffing clinics, phones, fairs and plant sales. Watch the newsletter for ideas and be sure to contact the coordinators from the list published in the newsletter this month.

I also send out requests for help from MGs via email. It is a great tool for getting out messages in a faster format than the traditional newsletter.

In order for you to hear about these events and activities, I need to have a current email address on file. If you change your address, be sure to let the MG office know so that we can stay in touch!

2012 TRAINEES

The trainees in the class of 2012 just finished the classroom training and are ready to start volunteering! Weston, Margaret and I are really excited to see this newest class of trainees join our valued veterans and see how rewarding it is to contribute to our local communities.

MG Guides and veterans are especially valuable now because the new trainees are going to need guidance as they learn how to get connected and feel at ease in their new roles. Veterans...make sure to introduce yourselves to the new class trainees, be open to some great questions and you will be rewarded by getting to know some really special people with varied talents.

Another bonus is that a class of 13 new metro online trainees for 2012 will be finishing their classes this month and will be joining the great list of opportunities that we offer. Welcome online trainees!

COORDINATORS SAVE THE DAY

Weston and I have been extremely lucky to have an incredible collection of class coordinators to hold things together at the 3 class sites. We had the additional challenge of holding classes in two new venues this year and the coordinators really stepped in to make things run smoothly.

A huge **thank you** goes to all the friendly, organized and dedicated MG class coordinators. They made important announcements, brewed coffee, supplied handouts, choreographed snack offerings, organized noon-time chats...and MUCH more.

Holding classes 3 days a week, for 11 weeks, in multiple locations is a *huge* job and is only possible thanks to these valued MGs. Many heartfelt thanks to you all!

Occasionally we have coordinators (for Markets and Fairs and so on) that need to move onto different tasks, leaving the coordinating positions open. I am putting the word out to see if anyone is interested in applying for the following positions:

Gresham Farmers' Market
Special days at Hollywood Farmers' Mkt.
Special days at PSU Farmers' Mkt.
Cedar Mill Farmers' Mkt. (for 2013)

Fall Home and Garden Show (Expo)
Blue Lake Discovery Garden (Metro)
Oregon State Fair



Call or email Jordis if you want to hear more.

Natter's Notes

Seeds & Seedlings

Jean R. Natter

Has the gardening itch struck you as yet? If not, it's likely to hit sometime soon. If you intend to start seeds, you could have started by now, but it's likely to be some time before you can set those tender fellows into the garden. While you wait, weed, weed, and weed some more. (Ah, we can grow so many different kinds of plants here in the northwest, but I do wish the weeds weren't so eager to join that trend.)

1. Obtain seed-starting containers. Just about anything will do as long as it's at least two inches deep and has drain holes. Plastic containers help prolong the availability of the limited moisture in such shallow containers. Some choices are plastic multi-celled propagation trays; 6-packs you've saved from previous years; or individual small plastic pots. (I like to use 4-inch plastic pots as a "community" pot, one pot per each kind of seed, then I transplant into individual pots as soon as the first set of true leaves expand.) Thoroughly wash every container which isn't brand new.

Another choice is to use individual peat pellets that expand when moistened. I've learned that these do best when set side-by-side, one pellet touching the next, thus helping to maintain moisture within the pellets. Better yet is a multi-cell tray with individual units the perfect size to hold just one expanded pellet.

2. Fill your clean containers with a sterile, fine-textured growing medium. You'll save yourself a lot of grief by obtaining a commercial seed-starting mix because they're sterile and have good drainage qualities in spite of being in shallow containers. (Splurge a bit; you deserve it!) No fertilizer needed at this stage.

Use a professional trick to fill the containers which will help the media remain light and airy. The technique provides the perfect amount of "packing" which retains good-sized air spaces in the media but still allows for excellent drainage.

- Set your containers in a group, the sides touching each other.
- Lightly moisten the media, by adding hot water and tossing to mix. The media must be uniformly moist, but not wet.
- Scoop the barely moist media into the containers.
- Sweep off all excess media with the side of your hand.
- One-by-one, pick up the containers and tap each one lightly on a hard surface 3 times from a height of 4 inches.
- Lightly tamp the surface of the mix in each container, just enough to level the surface. (This works well if the "tamping" tool is the bottom of another container the same size.



Fig 2: Leggy seedlings result from insufficient light; you must add supplemental light.



Fig 1: Damping off occurs when the growing mixture is too wet for too long, air circulation is low, and/or when soil temperatures are too low as with these beans.

3. Sow your seeds on the surface of the mix. Drop one or two seeds onto the surface of each of the smallest units. If you're using 4-inch pots, sparsely sprinkle about 20 seeds over the surface. With still larger containers such as a nursery flat, first create shallow rows, then seed.

4. Lightly cover the seeds with additional moist propagation mix, about 1/8-inch or so for very small seeds, to a quarter inch for larger seeds. (The seed packet often suggests an appropriate depth.) Larger seeds such as beans, corn, radish, and squash are best sown directly into the garden. But with these, make certain the soil is warm enough to allow rapid germination.

5. Water each container thoroughly by setting it in water; remove when the surface glistens with moisture, allow to drain, and set in a bright, moderately warm place about 70 to 80F. Bottom heat will speed germination.

You can easily create a greenhouse atmosphere for your seeds by slipping its pot into a clear container of some sort. Match the “greenhouse” to the size of your project. Many things work well, among them a clear plastic bag which rests on props to lift it above the surface of the mix; a clear shoe box, sweater box or other storage box; or a commercial propagation unit.

As soon as the seeds sprout, ventilate the sprouting chamber by lifting the lid a little bit or by loosening the tie on the plastic bag. This is no time to have a nasty case of damping off! (Fig 1) At this stage, maintain daytime temps of 65 to 70°F and nighttime temps of 55 to 60°F but no more bottom heat.

As soon as growth appears aboveground, your main challenge will be to provide sufficient light to grow sturdy seedlings. A sunny windowsill typically comes up short. (Fig 2) More likely, you’ll need to rig a light system of some sort. A 4-foot shop light, with two tubes, works well. Use two tubes of either cool white or warm-white, or one of each, then suspend the lights an inch above the seedlings, adjusting the height as needed when the seedlings grow. T-12 lights should be suspended a bit higher above the seedlings to avoid burning them. “Read” your plants, then adjust your lights up or down as needed. Whatever the kind of lights, your goal is sturdy, upright seedlings rather than leggy wimps that topple.



Fig 3: Symptoms of nitrogen deficiency are pale older leaves but with nicely green new growth.

6. Fertilize as soon as the cotyledons (baby leaves) are out flat. Begin with your favorite all-purpose soluble fertilizer diluted to quarter-strength. Fertilize every time you water, or every other time. If nitrogen is insufficient, the older leaves will yellow even while the newest leaves will be nicely green. (Fig 3) A purple cast to all the leaves indicates that the seedlings need all-purpose fertilizer now! Again, use a soluble kind that you dissolve in water.

7. Harden off your seedlings over a week to 10 days, setting them outdoors for a longer and longer time each day so that they can eventually withstand the additional rigors of the outdoors 24/7. Begin with an hour in lightly dappled shade, then gradually increase the time and amount of light. Once outdoors, the growing media will dry much more rapidly than before, so check the media daily to determine is adequately moist. Protect from winds and extra bright days. (Fig 4)

8. Transfer to larger growing quarters when the seedlings have two sets of true leaves.

And have fun. (Yum; I can almost taste those homegrown tomatoes already!)

Growing guides, some general, others specific

- “Grow Your Own” – An overview for vegetable gardening; page 7 lists planting dates; we’re in Region 2.

<http://ir.library.oregonstate.edu/xmlui/handle/1957/21092>

- “Propagating Plants from Seeds” has complete information about that topic <http://cru.cahe.wsu.edu/cepuplications/pnw0170/pnw0170.pdf>

- “How to Build Your Own Raised-Bed Cloche” <http://ir.library.oregonstate.edu/xmlui/bitstream/handle/1957/19908/ec1627-e.pdf>

- “Grow Your Own Peppers” <http://ir.library.oregonstate.edu/xmlui/bitstream/handle/1957/14128/ec1227.pdf>

- “Grow Your Own Tomatoes” <http://ir.library.oregonstate.edu/xmlui/bitstream/handle/1957/14210/ec1333.pdf>

- “Grow Your Own Rhubarb” <http://ir.library.oregonstate.edu/xmlui/bitstream/handle/1957/18475/ec797.pdf>

- “Grow Your Own Beans and Peas” <http://www.cals.uidaho.edu/edcomm/pdf/PNW/PNW0495.pdf>

- “Grow Your Own BEETS, CARROTS, RADISHES, ONIONS, AND SIMILAR CROPS” <http://extension.oregonstate.edu/deschutes/sites/default/files/ec1231.pdf>



Fig 4: Cucumber seedlings which suffered excessive environmental stress during the hardening-off phase; potential stressors were bright light and/or heat, possibly wind.

Internet Essentials for Master Gardeners

(Computer training sponsored by the Metro Master Gardener Program)

Gain Internet skills using Master Gardener Resources on Firefox

Everyone has a computer

Take one or two 3-hour classes each day; you choose

Date	Site	9 to noon	1 to 4 PM
June 9	PCC, Rock Creek*	PNW Handbooks (Disease; Insect; Weed); Search Techniques	MG Referral Forum (Upload Referrals & Images); Search Techniques
September 22	PCC, SE Center **	MG Referral Forum (Upload Referrals & Images); Search Techniques	PNW Handbooks (Disease; Insect; Weed); Search Techniques
October 13 Tentative	Clackamas College***	PNW Handbooks (Disease; Insect; Weed); Search Techniques	MG Referral Forum (Upload Referrals & Images); Search Techniques

*PCC, Rock Creek: 17705 NW Springville Rd. Portland, OR 97229

** PCC, SE Center: 2305 SE 82nd and Division, Portland, OR 97216

*** Clackamas Community College: 19600 Molalla Avenue, Oregon City 97045

Two different classes

- Navigating the online PNW Handbooks; also Search Techniques
- MG Referral Forum: Upload Referrals & Images

Class size is limited! Pre-register now!

Reminder will be emailed a week prior to class.

Pre-register with Jean Natter, J.R.Natter@aol.com or 503-645-7073

Please provide the following:

1. Your name, plus phone number or email address
2. Date(s) and time of session(s) you will attend

Donation of \$2 per class to cover cost of handouts



Master Gardeners Making a Difference

From April to September of 2011, Master Gardener Glad Willie volunteered over 200 hours with the Clackamas County GREEN Corps-Fresh Start Program. Glad worked closely with Beret Halverson, Extension Faculty from the Family and Community Health Program of Clackamas County. Together they trained at-risk youth, ages 14-18, from the Oregon City Service Learning Academy and The Clackamas County Juvenile Department, to manage two sites on the Red Soils Campus, one next to the OSU Extension building and the other behind the PSB and DSB buildings.



The Fresh Start group grew vegetables, herbs and flowers in a demonstration garden as well as landscaping nearby areas. 350 pounds of produce from the site was shared with the youth and donated to programs to promote good nutrition and healthy dietary practices. The youth also grew over 300 pounds of specific crops to sell at the Oregon City Farmers Market.

They have also expanded some of their activities to Hopkins Demonstration Forest in Oregon City. At Hopkins the youth learned about sustainable forest management practices. They also learned how to cull and chop fire wood which they also sold at the farmer's market.

Several of the youth have gone on to take classes at CCC, and find full time jobs in the community. OSU Extension's GREEN Corps-Fresh provides vulnerable disadvantaged youth with a, "Fresh Start." The skills learned help youth to create for themselves a successful future; a future filled with goals and aspirations. OSU Extension's GREEN Corps program planted a seed that became a tangible reality for seven young people last summer. As this program continues to blossom, it will provide many more young people in Clackamas County, the chance to, "Harvest their Potential". Look for their new juice and smoothie cart at the Oregon City Farmers Market this summer!

For more information on becoming a volunteer with GREEN Corps, contact Beret Halverson, 503-650-3131, beret.halverson@oregonstate.edu.

By working alongside the youth in the garden and providing them with mentorship, Master Gardener Glad Willie has made a difference in her community.

It's time for spring cleaning in the garden



CORVALLIS, Ore. – Think of it as spring cleaning. A few chores this time of year that will get your garden ready to bloom. Barb Fick, horticulturist for the Oregon State University Extension Service, recommends a few tips to help make your summer flowerbeds healthy and beautiful.

- Remove heavy winter mulch from perennial beds after night temperatures stay above freezing to allow sunshine to warm the soil. Leave a thin layer of mulch in place.
- Fertilize established perennials, bulbs and shrubs with compost, bone meal or a 5-10-5 or other balanced synthetic fertilizer. Apply fertilizer to the soil surface and then carefully scratch fertilizer into the soil between plants. Cover fertilized area with a thin layer of mulch.
- Rake leaves and debris knocked down by winter storms. Add leaves to the compost pile and shred larger branches.
- Divide late-spring and summer perennials, including daylilies, lilies and early chrysanthemums, if they seem crowded or past their prime. Dig up root clumps and remove the old, woody part in the middle. Replant young, healthy sections in loose, fertile soil. Pot up any extras and give them away to friends.
- Check and repair arbors, trellises and garden fences.
- Make sure pruning shears and other cutting tools are sharp and clean.
- Consider replacing or moving plants that have not performed well in recent years.

Now reward yourself with a stroll through your local nursery. Every year, a parade of new perennial varieties can entice you to fill every conceivable spot in the garden. Make sure that any new plant you purchase will match the specific characteristics of the garden bed you have just prepared.

Source: Barb Frick

Author: Judy Scott



MG Interest Group welcomes you

The goal of the MG Interest Group is to upgrade our abilities to identify and understand insects and spiders, also plant diseases and disorders. Our discussions are based on group participation; everyone adds their 2-cents! With this sort of informal practice, we can improve our comfort level while responding to client inquiries with appropriate research-based information.

Time: Meetings held most 1st & 3rd Mondays, 1 to 3 PM

- 1st Monday topic: An informal Show-and-tell session of critters, plants, and more submitted by Interest Group members.

- 3rd Monday topic: Study Guide (emailed to you about a week prior) for a current or upcoming gardening concern, and/or a presentation by another MG.

Place: Portland Clinic South; 6640 Southwest Redwood Lane, Portland, OR 97224
(Off I-5 at Carmen Drive)

Every tri-county OSU MG is welcome. To be added to the notification list, email J.R.Natter@aol.com.

Tualatin Basin Weed Watchers Workshops



Join us for a **FREE** workshop focusing on Early Detection Rapid Response (EDRR). After attending, you will be equipped to:

- Identify and report new invaders before they become a problem
- Use Best Management Practices to control existing invaders

Tuesday, April 24, 6:30-8:30 pm
 Leedy Grange
 835 NW Saltzman Rd
 Portland, OR 97229

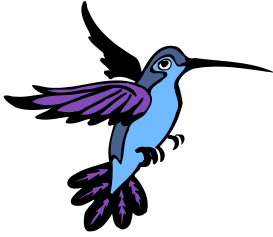
Thursday, May 10, 6:30-8:30 pm
 Forest Grove Community Auditorium
 915 E Main
 Forest Grove, OR 97116

Tuesday, June 5, 6:30-8:30 pm
 Tualatin River National
 Wildlife Refuge
 19255 SW Pacific Highway
 Sherwood, OR 97140

Please **RSVP!**
 To register online, go to www.solv.org.
 Click on Calendar of Events to register for one of the three dates.
 Call Lacey Townsend at 503-648-3174 x102 for questions.



NOTICES



The Audubon Society of Portland has asked the Master Gardeners to staff an information table at their 16th annual Native Plant Sale. The sale is Saturday and Sunday, April 28 & 29, with three shifts of two hours each day (10-12 am, 12-2pm, 2-4pm). Priority for the Sat 10-12am and Sunday 2-4pm shifts (and an extra hour) will be given to anyone willing to pick-up or return the MG info to the Clackamas County office.

The Audubon sale has grown over the years and now has over 100 species available. While there are information signs and handouts with size and cultural information, Audubon staff and volunteers no longer have enough time to answer all the longer pest and site specific questions at which Master Gardeners excel. Since the Audubon Campus at 5151 NW Cornell Blvd is quite near the Multnomah County Office at Montgomery Park, this event should also be good outreach for the wider information available from the MG program.

Volunteers should be familiar with growing Northwest native plants. They will also be able to buy plants at the volunteer discount. This is a direct service educational opportunity (maximum of two shifts per volunteer). Please contact Gregg Everhart 503-235-1815 gseverhart@gmail.com if you would like to volunteer.



VOLUNTEERING AT PORTLAND NURSERY FOR THE SPRING VEGETABLE SEASON.

Each year MG's volunteer for the Portland Nursery 90th and Division and are located in the area of the garden vegetables area. We are there for 7 weekends (Start April 21 and end June 3.) Shifts are: Saturday 10:00 to 2:00 and Sunday 11:00 to 3:00). We are there to help educate patrons about growing vegetables and to help them in their selection of plants. Many of the patrons are new to gardening and appreciate basic garden knowledge. If you are interested please contact Sandra Wallace. Sue18892@gmail.com.



Jackson Bottom Wetlands Preserve Native Plant Sale & Fair

Saturday, April 14, 2012

9:00am to 4:00pm

2600 SW Hillsboro Hwy.
Hillsboro, OR 97123

In addition to the sale of native perennials, shrubs, and trees; there will be free workshops, kids' activities, information booths and trail walks. Proceeds will benefit the Jackson Bottom Wetlands Preserve non-profit organization.

HORTICULTURAL CALENDAR FOR THE METRO AREA

- April 2** MG Interest Group. Bring an interesting critter or a troubled plant
- April 3** Washington County Chapter; *"Insect IDing"* with Rich Baer, Portland Rose Society
- April 7-8** Hardy Plant Society Plant Sale
- April 9** Clackamas County Chapter; Marc Boucher-Colbert, Garden Specialist at Franciscan Montessori Earth School, *"Getting the Respect You Deserve from Your Vegetable Garden: Making It Work for You Instead of the Other Way Around"*
- April 10** Multnomah County Chapter, 6pm, Welcome Potluck for Intern MGs. 7pm, Keynote Speaker: Tom Cook, Associate Professor Emeritus of Horticulture, OSU , *"Developing the Sustainable Landscape"*
- April 16** MG Interest Group. Study Guide for Mummyberry
- April 18** Washington County Chapter tour of Terra Nova Nursery and Wooden Shoe Tulip Festival Tour; See chapter page for details.
- April 21** Villa Garden Club Spring Plant Sale, 10AM—3PM, Taber Heights Methodist Church, 6161 S.E. Stark, Portland, OR
- April 27** Seed Propagation Workshop w/Elizabeth Howley; see Clackamas County Chapter page
- April 28** Washington County Master Gardener Plant Sale at Kinton Grange, 19015 SW Scholls Ferry Rd., Beaverton, OR 8:30—3 pm
- April 28-29** Audubon Society Plant Sale see info elsewhere in this issue
- May 1** Washington County Chapter, *Growing Orchids and Their Care*, Greg Nielson, Oregon Orchid Society
- May 5** Multnomah County Chapter, ***Incredible Edibles Plant Sale***, 10am to 5pm, details in April newsletter.
- May 5-6** Clackamas County Chapter Spring Garden Fair, Canby Event Center
- May 6** Schreiner's Iris Garden display garden opens to the public thru June 12; 9 AM-6PM
- May 8** Multnomah County Chapter, 7pm, James Cassidy, OSU, Department of Crop and Soil Science, *"Lessons From the OSU Organic Garden"*.
- May 14** Clackamas County Chapter, *Garden Fragrance Throughout the Year*, Nadine Black, Joy Creek Nursery
- Jun 2** Starlight Parade
- Jun 7-8** Portland Rose Society Spring rose show
- Jun 20** NWREC Open House—more information to come
- Jul 25-27** Mini College on the campus of Willamette College in Salem
- Sep 1-2** American Dahlia Society National Show, Columbia Red Lion Hotel, Portland





MULTNOMAH CHAPTER GRAPEVINE

Oregon Master Gardener™ Association in cooperation with OSU Extension Service Master Gardener™ Program

Chapter Meeting 10 April 2012

Mt. Tabor Presbyterian Church, 5441 SE Belmont St.

6:00 Welcome Potluck for 2012 Interns

An evening to welcome and celebrate the new 2012 class of MGs.

Interns: bring your appetite, a plate, and utensils.

Veterans: bring a dish to share, your appetite, a plate, and utensils. *With a 3 x 5 card listing the name of the dish and ingredients.*

Following the potluck @ 7pm

Keynote Speaker: Tom Cook, Associate Professor Emeritus, OSU Horticulture Department
'Developing the Sustainable Landscape'

Sustainable landscape management is all about thoughtful design and maintenance strategies that seek to minimize landscape features that require excessive inputs or are impractical to maintain for long periods of time. Sustainability is an ongoing adventure, since landscapes constantly evolve as plants grow and die and microclimates change. Any landscape can be sustainable if gardeners are willing to adjust expectations, make appropriate changes in plantings and carefully think through how they go about maintaining their gardens.

This presentation will look at a wide range of sustainable options for developing functional landscapes. It will address the relative sustainability of common landscape features, including lawns, herbaceous perennial gardens, and native species plantings in suburban and urban settings. Common issues in soil management will also be discussed.

During his 31-year career at OSU, Cook developed the turf and landscape program in the Horticulture department. Cook received numerous teaching awards at OSU, including the R.M. Wade award for excellence in teaching in the College of Agriculture and is listed in Who's Who Among America's Teachers. He recently co-authored "Sustainable Landscape Management" with Ann Marie VanDerZanden of Iowa State University.

*****Next Board Meeting – Tuesday, 24 April 2012 at 5:30 pm at Claudia's – 4026 N.E. Hazelfern.**

*****Coming up...8, May, 2012, Chapter Meeting, 7pm**
Lessons from the OSU Organic Garden James Cassidy, OSU, Department of Crop and Soil Science

Raised beds vs. straight rows vs. intensive planting? Do you really need fertilizer or will compost do? Double digging? Beetle banks? Companion planting? Get practical vegetable gardening advice from James Cassidy, Faculty Advisor, to the OSU Organic Growers Club – a student-run organic garden and successful organic produce venture.

****Incredible Edibles – Save the Date!**

Embrace home-grown goodness on Saturday, May 5th at the *Incredible Edibles Plant Sale!* 10am to 3pm, on the grounds of All Saints School, 601 NE Cesar E. Chavez Blvd (formerly NE 39th Ave.). The *Incredible Edibles* sale will offer a luscious array of local, organically grown, vegetable and herb starts. You'll find both heirlooms and hybrids among proven varieties of tomatoes, cukes, peppers, eggplants, squash, greens, lettuces, herbs and more. Varieties offered have been specially selected for their ability to thrive right here in our Pacific Northwest climate. Join us as we celebrate growing our own food! <http://metromastergardeners.org/multnomah/plantsale/>

*****Fall Plant Sale –** Think of the plant sale when you divide your plants this spring. We also like bulbs, seeds and decorative garden items. Please use gallon pots and contact Joyce Hemmerling 503-331-0824 W3mjahemm@aol.com if you need any pots or have questions.

*****Other Goods:** <http://www.metromastergardeners.org/multnomah/merchandise/>

*****Awards.** Many of our members are making significant contributions to the chapter. It is time to be thinking of who will receive awards for County and State Master Gardener of the Year, County and State "Behind the Scenes Master Gardener of the Year", and Mini-college Scholarships. Special awards are given for specific contributions, too. Please be considering who you will nominate when the details and forms come out this spring.

*****Phones in Multnomah County** - Sally Campbell: sally.mult.phones@gmail.com or (503)810-8717

2012 Officers and Contact Information

President – Claudia Groth 503-235-0669 claudia_groth@hevanet.com

Vice President - Joyce Hemmerling 503-331-0824
W3mjahemm@aol.com

Secretary – Carrie McIntyre 503-984-1109 lehua_mc@yahoo.com

Treasurer – Christine Semeniuk 503-493-0994 chrissem@comcast.net

OMGA – Mary Fiocchi 503-312-6762 maryto@johnlscott.com

OMGA Alternate – JoAnn Bones 503-253-3168
bones7247@comcast.net

Grapevine – Lorna Schilling 503-334-5162 lornaschilling@yahoo.com

Chapter Email – multmastergardeners@gmail.com

Chapter Website – <http://www.metromastergardeners.org/multnomah/>



Washington County Chapter Chat

Oregon Master Gardener™ Association in cooperation with

OSU Extension Service Master Gardener™ Program

UPCOMING CHAPTER MEETINGS & PROGRAMS

Tuesday, April 3, 2012 “**The Good, Bad and Bugly - A pictorial look at common garden insects.**” presented by Rich Baer of the Portland Rose Society.

Tuesday, May 1, 2012 “**Growing Orchids and Their Care**” with Greg Nielson of the Oregon Orchid Society.

Meeting Location and Time - First Baptist Church 5755 SW Erickson Ave., Beaverton, OR 97005. Social gathering at 6:30 p.m., Chapter meeting at 6:45 pm followed by the program at 7:15. The public is welcome.

Note: April 3rd Chapter Meeting is Intern Welcome Potluck.

Plan on arriving at 6 p.m. We will eat at 6:15.

The **Speakers' Bureau in Washington County** will have an orientation meeting for all MG's who think they might be interested in joining the group. We have openings for both new speakers and program developers. Both positions will offer the opportunity to get Primary volunteer hours. The meeting is on Wed., April 11th, 10:15 am at the Cedar Mills Community Library, 12505 NW Cornell, Portland. If interested just come, or contact Lynn Cox (lynn.cox@zsqared.net).

Garden Thyme at the Fair – Children's Activities will have a planning meeting for all MG's who would like to help develop garden activities for children during the Wash. Co. Fair at the demo gardens. The meeting is on Wed., April 11th, 1pm, at the First Baptist Church, Erickson Rd, Beaverton, OR. If interested come to the meeting, or contact Lynn Cox (lynn.cox@zsqared.net).

Mark Your Calendar

April 28th WCMGA Three-Buck-Plant Sale

8:30 a.m. -3 p.m. at Kinton Grange 19015 SW Scholls Ferry Rd. Many hardy perennials at \$3/gal. Annuals, small shrubs, natives & ferns are available; there is a dollar-a-pot table & a raffle. Dig and divide, bring plant donations to the April meeting.

July 21st – 9 a.m. - 4 p.m. WCMGA Garden Tour

Join the Field Trip Team The team needs a couple more members to help scout out and plan trips to unique gardens, nurseries, etc. New interns are especially welcome and can earn support hours. Great opportunity to see new places and support the chapter. Contact Judy Hale at judyahale@gmail.com or 503-590-7221.

Help Plan the Annual Picnic The WCMGA is creating a new committee to help with our annual July picnic. You will be working with our gracious hosts Jane and Dick Miller who have been both hosting and planning this very popular summer event for several years. Now it's time for the chapter to provide some hands on support. Great way for new interns to learn more about our chapter and earn support hours. Contact Judy Hale at judya.hale@gmail.com

Terra Nova Nursery and Wooden Shoe Tulip Festival Tour Join our fellow Master Gardeners, Wednesday, April 18th, for a tour of Terra Nova Nursery in Canby, Oregon. Terra Nova is a wholesale nursery and breeder of 100's of spectacular plants for the home garden.

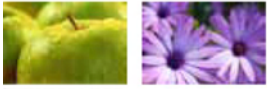
Tour includes their lovely display gardens, production area, and discussion of tissue culture. This is a rare opportunity to see a nursery not generally open to the public! Following the tour of Terra Nova, we'll visit the Wooden Shoe Tulip Festival for a presentation on the history and operation of the farm and "tulip tips." For details Contact Joann Caruthers at 503-625-1793 or use the Terra Nova Registration Form available at:

www.washingtoncountymastergardeners.org/MembersPage.html

A New WCMGA Awards and Recognition Policy is available at: www.washingtoncountymastergardeners.org/MembersPage.html

March Golden Trowel Award Recipients: Ron Spendal and Bob Campbell each were recognized for recent major contributions to the WCMGA demo gardens.

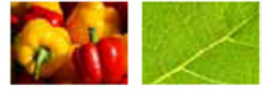
President	Bob Falconer	503-277-8596	Vice President	Sandy Japely	503-644-2637
Treasurer	Lynn Cox	503-629-9156	Record Sec.	Diane Allen	503-244-8599
Submit Chapter Chat announcements to Chapter Chat editor email: age.mary@gmail.com					
Please send any email or address changes to info@wcmga.info					
Chapter Website: www.washingtoncountymastergardeners.org					



APRIL

Clackamas County Chatter

The Oregon Master Gardener Association in Cooperation with
OSU Extension Service Master Gardener™ Program



2012

April Chapter Meeting

Monday, April 9, 2012

7 p.m.

Milwaukie Center

5440 SE Kellogg Creek Drive

Milwaukie

Getting the Respect You Deserve from Your Vegetable

Garden: Making It Work for You Instead of the Other Way Around

You can have a great year-round veggie garden with minimal time investment, if you garden smartly. Cut down on back-breaking labor. Win the battle with difficult soil. Squeeze as much produce as possible out of small spaces. Enjoy fresh food year-round. Take back ownership of your vegetable garden, and tell it what YOU want it to do.

Marc Boucher-Colbert is a Garden Specialist at Franciscan Montessori Earth School in Portland. His duties run the gamut from teaching botany lessons to growing food for the school lunch program to landscaping to grant writing. He also operates Urban Agriculture Solutions, LLC, which provides creative garden solutions for city gardeners. (UAS's most notable project is a six-year-old edible garden on Noble Rot restaurant's rooftop on East Burnside in Portland.) For many years, Marc operated Urban Bounty Farm, one of the first community supported farms in Portland. Marc lives in NE Portland with his wife and two children.

May Program

Monday, May 14, 2012, 7 p.m.

Garden Fragrance

Throughout the Year

Nadine Black of Joy Creek Nursery will spark your imagination and widen your experience in the garden by sharing a variety of plants that offer fragrance throughout the year.

Green Glove Award

The March recipient of the Green Glove Award was **Meredith Hilderbrand**. She is Vendor Co-Chair for the Spring Garden Fair. She has worked many hours gathering a record number of vendors for this year's event. She is active at Hopkins Demonstration Forest and other Chapter events. She always has a winning smile. Congratulations to Meredith Hilderbrand, March's Green Glove Award winner.

Open Gardens

Co-Chairmen **Sharon Wiley** and **Kathleen Chroninger** are asking members to contact them if they are willing to share their gardens with Chapter members. 2012 promises to have an exciting array of gardens to visit. The locations are on the Chapter Web site.

Garden Discovery Day

We had at least 970 contacts at Garden Discovery Day, our OMGA award-winning Community Outreach program. Thanks to **Sherry Sheng** for coordinating this excellent event and to the many Chapter members who helped make this program a success.

Spring Garden Fair

May 5 & 6, 2012

Canby Event Center

Planning is going well for this exciting annual event. We will have more vendors, a larger food court, and a reorganized Exhibits Center. The SGF Committee, chaired by Herb Davis, is working very hard to make this important community event better than ever. Please make every effort to give some time to the Chapter's major fundraiser of the year.

Seed Propagation Workshop: Success with Seeds

Friday, April 27

2 to 4 p.m.

Clairmont Hall
Room 117, CCC

Come learn from Elizabeth Howley, CCC Horticulture instructor, how to most effectively raise plants from seeds. The fee is \$9.00 for which you will receive all of the supplies needed (seeds, propagation tray, cover). Send your check to **Madeline Forsyth** at 2114 NW 5th St, Gresham OR 97030 and sign up at mpforsyth849@yahoo.com.

President • Frank Wille: 503.342.6699 — Vice President • Will Hughes: 503.887.9380

Secretary • Darlene Reimer: 503.698.4648

Advisory Board • Buzz Oerding: 503.233.6974

OMGA Rep • Terri Hoffman: 503.982.4825

Treasurer • David Smith: 503.656.4613

Advisory Board • Mary Butler: 503.632.1532

OMGA Alt. Rep • Karen King: 503.467.8800

Assist. Treasurer • Seamus Ramirez: 503.342.6229

Advisory Board • Sharon Andrews: 503.577.7493

Newsletter • Kathy Johnson: 503.794.3959

Web sites: <http://extension.oregonstate.edu/mg/> — <http://www.clackamascountymastergardeners.org/>

APRIL 2012 MG NEWSLETTER

April 2012

Garden hints from your OSU Extension Agent

Oregon State University Extension Service encourages sustainable gardening practices. Preventative pest management is emphasized over reactive pest control. Identify and monitor problems before acting, and opt for the least toxic approach that will remedy the problem.

First consider cultural, and then physical controls. The conservation of biological control agents (predators, parasitoids) should be favored over the purchase and release of biological controls. Use chemical controls only when necessary, only after identifying a pest problem, and only after thoroughly reading the pesticide label. Least-toxic choices include insecticidal soaps, horticultural oils, botanical insecticides, organic and synthetic pesticides — when used judiciously.

Recommendations in this calendar are not necessarily applicable to all areas of Oregon. For more information, contact your local Extension office (<https://www.extension.oregonstate.edu/locations.php>).

Planning

- Write in your garden journal throughout the growing season.
- Prepare garden soil for spring planting. Incorporate generous amounts of organic materials and other amendments, using the results of a soil analysis as a guide.
- Prepare raised beds in areas where cold soils and poor drainage are a continuing problem. Incorporate generous amounts (at least 2") of organic materials.

Oregon State University Extension Service encourages sustainable gardening practices. Always identify and monitor problems before acting. First consider cultural controls, then physical, biological, and chemical controls (which include insecticidal soaps, horticultural oils, botanical insecticides, organic and synthetic pesticides). Always consider the least toxic approach first.

All recommendations in this calendar are not necessarily applicable to all areas of Oregon. For more information, contact your local office of the OSU Extension Service.

- Use a soil thermometer to help you know when to plant vegetables. When the soil is consistently above 60°F, some warm season vegetables (beans, sweet corn) can be planted.

Maintenance and Clean Up

- Allow foliage of spring-flowering bulbs to brown and die down before removing.
- Apply commercial fertilizers, manure, or compost to cane, bush (gooseberries, currants, and blueberries), and trailing berries.
- Place compost or well decomposed manure around perennial vegetables, such as asparagus and rhubarb.
- Cut back ornamental grasses to a few inches above the ground, in early spring.
- Cover transplants to protect against late spring frosts.
- Optimum time to fertilize lawns. Apply 1 lb. nitrogen per 1,000 sq. ft. of lawn. Reduce risks of run-off into local waterways by not fertilizing just prior to rain, and not over-irrigating so that water runs off of lawn and onto sidewalk or street.
- **Western Oregon:** Optimum time of year to de-thatch and renovate lawns. If moss was a problem, scratch surface prior to seeding with perennial ryegrass.
- **Western Oregon:** Prune and shape or thin spring-blooming shrubs and trees after blossoms fade.

Trade-name products and services are mentioned as illustrations only. This does not mean that the Oregon State University Extension Service endorses these products and services or intends to discriminate against products and services not mentioned.

Oregon State University | Extension Service

Gardening information online—<http://extension.oregonstate.edu/gardening>