



# Metro Master Gardener™ News

## April 2009

**OSU Extension Service  
Metro Master Gardener™ Program**

Serving [Clackamas](#), [Multnomah](#), and [Washington](#) Counties in the metro area since 1976.

### Mission Statement

We provide relevant, research-based education and outreach to the public of Clackamas, Multnomah, and Washington Counties about horticulture and household pests. This information promotes sustainable practices that minimize risks to human health and the environment.

### Program Staff

**Weston Miller- Horticulture Faculty**

[weston.miller@oregonstate.edu](mailto:weston.miller@oregonstate.edu)

(503) 650-3124

**Jordis Yost- Program Assistant**

[jordis.yost@oregonstate.edu](mailto:jordis.yost@oregonstate.edu)

(503) 650-3118

### Newsletter Volunteers

**Ellen Hanley- Volunteer Editor**

[ellenpoppy@aol.com](mailto:ellenpoppy@aol.com)

**Heidi Nichols- Proof Reader**

[heidinichols@comcast.net](mailto:heidinichols@comcast.net)

### Mailing Address

Clackamas County Extension Service  
200 Warner-Milne Rd.  
Oregon City, OR 97045



## Table of Contents

	<u>Page</u>
Metro Program Update by Weston Miller	2
Opportunities from Jordis	3
2009 Coordinators List	4
Recertification Training Information	5
Natter's Notes –A Pesky Caterpillar	7
Horticultural Calendar	9
Notices	10
See You At The Fair?	13
Notices	14
Plants for Hummingbirds	19
Notices	20
Washington County Page	21
Clackamas County Page	22
Multnomah County Grapevine	23
Garden Hints for April	24

Happy spring Master Gardeners!

Congratulations to all of the new Master Gardener trainees in the metro area who recently completed the 2009 Master Gardener training! We appreciate your attendance at the training and look forward to serving you to make your experience as an MG intern fun and smooth. Please contact Jordis and me with any questions, comments, or concerns regarding your internship.



We also would like to thank the many, many MGs who served as class coordinators to help make the MG training such a special program. We truly appreciate your time and energy toward making the MG training possible. We could not do it with out you! THANK YOU!

For both MG interns and veterans, now that spring has sprung (almost) it is time to take part in the many activities that are part of our volunteer program. Please keep in mind that you are a volunteer representing OSU Extension Service, so please represent yourself accordingly. Also remember that as a volunteer, the time that you spend as an MG should be fun! Make sure to take care of your own needs as a volunteer so that your time is full of learning (for you and our clients).

Also, please remember that we need your volunteer log sheet by October 1, 2009 so that we can complete our annual reporting by the end of the year.

Stay tuned to our monthly newsletter and occasional email announcements to know what is happening in the Master Gardener program in Clackamas, Multnomah, and Washington Counties.

On a personal note, my wife Katie and I are expecting our second child in mid-April. I have completed paperwork for the Oregon Family Medical Leave Act and plan to take considerable time off to be with my family when the baby comes and through the spring and summer. My goal is to support my family physically and emotionally and to keep the many aspects of our program going smoothly. Thus, I will be taking time off periodically each week to take care of my family. I will stay in communication via email ([weston.miller@oregonstate.edu](mailto:weston.miller@oregonstate.edu)) and cell phone 503-706-9193.

Happy spring and take care!

Sincerely,

Weston Miller, Community and Urban Horticulturist

Also, please take a look at the description of the Urban Pesticide Reduction Program (UPRP) that state-wide Master Gardener Coordinator Gail Langellotto is putting together for the Metro area:

### **Urban Pesticide Reduction Program**

Want to better understand what pesticides are and what they do? Then come be a part of the Urban Pesticide Reduction Program (UPRP). Master Gardeners who participate in the UPRP will be trained to teach a 3 part curriculum to their neighbors and others in the community. Part 1 of the curriculum includes an introduction to pesticides and a pesticide audit (how much pesticide do you use?). Part 2 will focus on risks to human and environmental health. Part 3 will focus on alternatives to pesticides, as well as ways to judiciously use and reduce pesticide use in the home and garden. Each Part is taught as a 2 hour class, 6 hours total for the full training. This training counts toward MG re-certification hours. Time spent organizing and delivering the 3 Part curriculum to your community counts as educational hours. Training will be held between May 18-30th in the Metro area, exact times/dates/locations of training TBA. If you know of a space suitable for hosting a training session in Mult/Clack Co, contact Monica Maggio UPRP Project Manager (see below).

\*In the April 11th re-certification class, Gail Langellotto will present a broad overview of the program, requirements for volunteer educators, and benefits of teaching (educational hours!) or participating (re-certification hours!) in the Urban Pesticide Reduction Program. Come if you can!\*

If interested, or for more information, please contact:  
Monica Maggio

Project Coordinator, Urban Pesticide Reduction Program  
[monica.maggio@oregonstate.edu](mailto:monica.maggio@oregonstate.edu)  
541-224-2864

**OPPORTUNITIES FROM JORDIS**  
503-650-3118 Jordis.Yost@oregonstate.edu



**SPRING ARRIVES!**

This is a busy time of the year for Master Gardeners. We are staffing clinics, on phones, and at fairs and plant sales. Watch the newsletter for ideas and be sure to contact the coordinators from the list published in the newsletter this month.

I also send out requests for help from MGs via email. It is a great tool for getting out messages in a faster format than the traditional newsletter.

In order for you to hear about these events and activities, I need to have a current email address on file. If you change your address, be sure to let the MG office know so that we can stay in touch!

**WELCOME NEW TRAINEES**

The trainees in the class of 2009 just finished the classroom training and are ready to start volunteering! This has been an especially fun and engaged group, and I am looking forward to working with them this coming year.

Veterans are especially valuable now because the new trainees are going to need some guidance as they begin to learn how this all works. Make sure to introduce yourselves to the new class trainees and you will be rewarded by getting to know some special people with varied talents.

Another bonus is that the class of metro online trainees will be finishing their classes this month and will be joining the activities soon after. Welcome online trainees!

**COORDINATORS SAVE THE DAY**

Weston and I have been extremely lucky to have an incredible collection of class coordinators to hold things together at the 3 class sites.

A huge **thank you** goes to all the friendly, organized and dedicated MG class coordinators. They made coffee, supplied handouts, choreographed snack offerings...and MUCH more.



Holding classes 3 days a week, for 11 weeks, in multiple locations is a *huge* job and is only possible thanks to these valued MGs. Many heartfelt thanks to you all!

**RECERTIFICATION CLASS**

Saturday, April 11<sup>th</sup> at PCC Rock Creek Campus – see enclosed flyer for more information.

We are planning a day of valuable updates and information coming from OSU program leaders and others. It is always a great time to learn and reconnect with MGs. This is the second in a series of two recertification trainings for veterans so that they will be available in the 2009 gardening season.



## 2009 COORDINATOR LIST

Most coordinators are listed, but others are yet to be announced. Jordis will send updated lists in the future.

### ❖ FARMERS' MARKETS

**Beaverton** - Barbara Watson 503-292-6515

**Cedar Mill** - George Vennes 503-645-2596

**Gresham** - Lillian Miller 503-622-6123

**Hillsboro** - Kim Culbertson 503-681-9469

**Lake Oswego** - Phyllis McCanna 503-638-6109  
Kathy Whitman- kathywhitman@juno.com

**Milwaukie** (Sundays) Linda O'Toole 503-659-5309  
Ellen Hanley 503-266-4486 ellenpoppy@aol.com

**Oregon City** - Janet Weber - 503-658-3403  
weberjanet@hotmail.com

**Sherwood** - Suzy Wood 503-538-9947

**Tigard** (Sundays) Carole Watkins 503-639-0058

### ❖ OTHER CLINICS

#### **Crystal Springs Rhododendron Garden**

Dan Beasley 503-246-2727  
Linda O'Toole 503-659-5309

#### **Fall Home and Garden Show**

Cynthia Marshall 503-246-4715

#### **Portland Nursery Events** (June and October)

Susan Greco 503-287-9089

#### **Raleigh Hills Fred Meyer**

Carol Grasvik 503-246-3978

#### **Rose Test Garden Clinic**

Pat Troyer 503-257-8526

#### **Rose Test Garden Tour Guide**

Bill Bradley 503-624-8435



#### **Oregon Zoo**

Diane Maurer 503-315-5075 cell  
icdg@comcast.net

### ❖ SPEAKER BUREAU

**Clackamas County** - Leah Lane 503-632-4926

**Washington County** - Kim Beaudet 503-697-8624

### PHONES

#### **Clackamas County Office** -

Hotline # 503-655-8631



#### **MG Schedule Coordinator** -

Joby Duggan 503-632-2165  
joby@bctonline.com

#### **Multnomah County Office**

Hotline # 503-445-4608 (after Apr 1)

#### **MG Schedule Coordinator**-

Gloria Bennett 503-775-4005  
deleopatra@comcast.net

#### **Washington County Office** -

Hotline # 503-725-2300

#### **MG Schedule Coordinator** -

Heidi Nichols 503-774-6888 heidinichols@comcast.net

### ❖ FAIRS

#### **Clackamas County Fair** ( Aug 18-23)

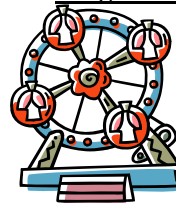
Gerry Emerson 503-656-9726

#### **Washington County Fair** ( July 30-Aug 2)

David Rullman 503-292-1603

#### **Oregon State Fair** (Aug 28-Sept 7)

TBA



### ❖ SHOWS OR TOURS

#### **Metro 'Gardens of Natural Delights' Tour**

Sabrina Gogol 503-797-1938 (Metro office)

#### **'Seeding Our Future' Garden Tour** (June 27)

Susan Underhill jocktlc@earthlink.net 503-431-2002

### ❖ HANDS ON

#### **1860's Heritage Kitchen Garden** - Champoeg State Park

Marie VanPatten 503-678-1251 x223

#### **Doernbecher** - Kids Garden Activities

Nancy Nagel - 503-228-4897  
Sharon Baker - 503-284-5189

#### **Pittock Mansion** - Heather Kibbey 503-620-7239

#### **Oregon Food Bank** - Learning Garden / Wash. Co.

Lisa Waugh 503-439-6510 x314

#### **Oregon Trail Interpretive Center**

Jean Erickson bjeanerickson@msn.com 503-636-3967

#### **Spring Garden Fair** - Volunteer Coordinator

Karen

503-762-



Greenleaf

kgreenleaf@q.com  
7775

Spring 2009

Portland Metro Area

OSU Master Gardener™

Recertification Training

Saturday, April 11 PCC Rock Creek Campus – Bldg 9

8:30 am to 3:30 pm

---

## Agenda

**Doors open at 7:30 am**

**8:00 am** Registration and gathering

**8:30 am** Welcome and announcements

**8:45 - 10:15 am** **Resources and Advice for New Vegetable Gardeners-** Lim Lanfri, Washington County Master Gardener and avid vegetable gardener.

There is increasing interest in vegetable gardening in the general public. The Master Gardener Program is receiving more inquiries from clients about starting vegetable gardens as a response to economic and/or environmental concerns. Many of these clients do not have basic gardening knowledge and skills. How can Master Gardeners help these clients? Learn how to provide these new gardeners with the resources and knowledge that they need to be successful vegetable gardeners.

**10:30 - noon** **Honey Bees and Colony Collapse Disorder-** Dr. Ramesh Sagili, OSU Faculty

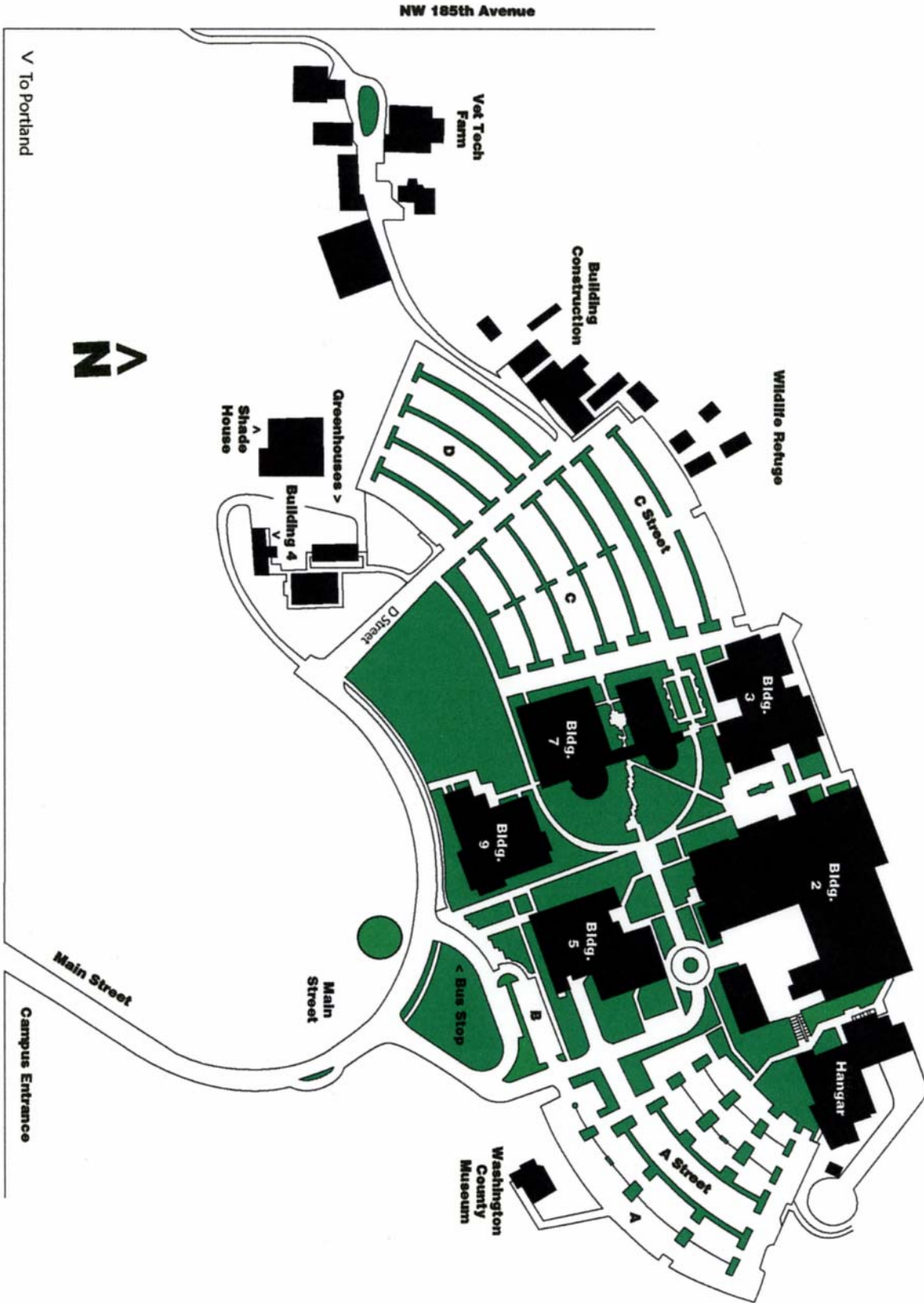
Honey bees and other native pollinators are taken for granted. Reports of colony collapse disorder in the past three years have caught everyone's attention. Honey bee colonies have been under steady decline since past two decades and hence need urgent attention. In this seminar following topics will be discussed: 1) Importance of honey bees, especially as pollinators, 2) Introduction to CCD (what is CCD?), 3) Possible causes of CCD, and 4) What can we do to overcome CCD?

**Noon - Lunch break** - Time to catch up with other MGs, pick up certificates, look at items for sale.

**12:30 - 3:30 pm** **Urban Pesticide Reduction Program-** Gail Langellotto, Statewide MG Coordinator and Monica Maggio, MG and OSU Extension Program Assistant

In this class, you will learn about the Urban Pesticide Reduction Program. As part of this program, Master Gardeners will be trained to teach a 3 part curriculum to their neighbors and others in the community. Part 1 of the curriculum includes an introduction to pesticides and a pesticide audit (how much pesticide do you use?). Part 2 will focus on risks to human and environmental health. Part 3 will focus on alternatives to pesticides, as well as ways to judiciously use and reduce pesticide use in the home and garden.

On April 11th, we will present a broad overview of the program, requirements for volunteer educators, and benefits of teaching (volunteer hours!) or participating (recertification hours!) in the Urban Pesticide Reduction Program.



## Natter's Notes

### A Pesky Caterpillar

Jean R. Natter

Every spring, gardeners complain about serious amounts of plant damage from unseen chewing critters, then typically blame the slugs so common in our region. More often than not, the unwanted diner is a caterpillar, by the name of large yellow underwing.

The clues to differentiate these two potential culprits are in the damage. Most slugs leave a silvery slime trail. But when a caterpillar is at work, you'll see that the edge of the missing tissue is a series of teeny scallops formed as the cat dined. This caterpillar typically eats leaves from the edge but sometimes also in the interior of the leaf blade. And when they fed on my iris leaves, they often ignored the tough edge such that the missing portion appeared to be outlined by a string.

This caterpillar is a generalist, feeding on a large array of herbaceous plants, both ornamental and edible. In past years, they particularly enjoyed my iris leaves and buds of both the Pacific Coast and bearded kinds. One of the concerns here in the valley is for Oregon's commercial turf and grass seed growers because the caterpillars have been reported as economically damaging hay fields in Michigan.

When disturbed, the cat drops to the ground and assumes a C-shape as would a cutworm. Although most online sources refer to them as cutworms, an entomologist from the Oregon Department of Agriculture crinkled his nose when I asked if that name was appropriate for this critter. So I guess not.

Oh well. No matter what you call it – cutworm, climbing cutworm, or large yellow underwing – you need to keep your eyes

peeled in your springtime garden for this major eating machine.



Figure 1: Light-colored *Noctua* removed from lawn; notice the nearby holes in the turf.

This voracious caterpillar is *Noctua pronuba*, and has the common names of large yellow underwing, also greater yellow underwing. It's in the Order Lepidoptera (butterflies and moths), Family Noctuidae (cutworms, semi-loopers and underwings). And, as it turns out, it's a relatively new arrival from Europe that was first identified in Nova Scotia in 1979, then arrived on the west coast in, or around, 2001. Here in the Metro Counties, we were seeing rather large numbers of them by 2003.

The moth's hindwings are described as yellow – my eye reads the color as a rather bright harvest-orange – bordered with a black band just above the rearmost edge. And although photos show various color forms of forewings, all the moths I've reared through recent years have been dark-winged forms, some so dark that it's difficult to discern the patterning on the wings.



The OSU Insect Clinic has an image of the adult at

[http://www.science.oregonstate.edu/bpp/insect\\_clinic/images/Noctua%20pronuba.jpg](http://www.science.oregonstate.edu/bpp/insect_clinic/images/Noctua%20pronuba.jpg)

whereas a nice close-up of the larva is at

<http://homepage.ntlworld.com/ray.hamblett1/nature/natimages/inverts/caterpil1385.jpg>.

Then, too, you'll find concise info with clear images from Michigan state University in *Winter Cutworm, Noctua pronuba; First Report of Economic Damage in Michigan* at

[http://www.msue.msu.edu/objects/rte/File/Winter\\_Cutworm1.pdf](http://www.msue.msu.edu/objects/rte/File/Winter_Cutworm1.pdf).

The characteristic patterns to look for on each body segment are black dashes down the back with a light-colored band under each dash, a white backward-slash on the side, and a black dot in front of each slash.

**This year, several interns brought in *Noctua* caterpillars**, all of them a lighter-colored form than I'd seen previously, each one tinged with pale green on the anterior half of the body.

Although four of those were recruited for my hands-on exercise in Entomology, I did keep one to rear out which then transformed into a pupa on March 2. (See Figure 1.) So I'm now impatiently awaiting the adult's emergence because I'm itching to know if this light-colored larva will also be a light-colored adult. In the meantime, the pupa resides in a covered petri dish on the kitchen counter where I'm able to observe it daily.

**I found more caterpillars in the turf** at the Beaverton site where we train the Washington County MGs. There, my curiosity was aroused because of the many 1/2-inch holes in the very wet turf. (See Figure 2.) You can see some of the holes adjacent to the cat.

The adults are among the various moths attracted to outdoor lights. The bright orange on the hindwings makes it easy to recognize them as they fly away. You're likely to see the adults during late spring, early summer and sometimes later on.



Figure 2: *Noctua* pupa with the shed skin of its final larval stage to the right.

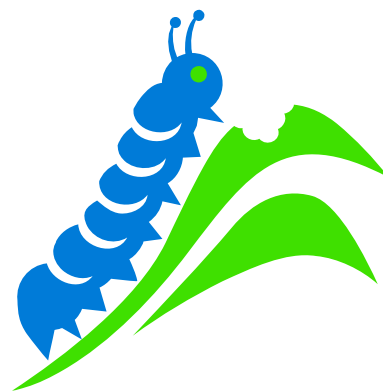
**Managing these caterpillars can be tricky.** Because they over-winter as caterpillars, you need to be alert early in the year. This year I found my first 5/8-inch cat in January. Its kin will continue feasting until mid-May or later.

About 10 pm is a good time for a search-and-destroy mission. Knock the cats into soapy water or snip in half.

Using *Bacillus thuringiensis* (*Bt*) is a less gory technique as well as the least-toxic spray you can use.

Even so, it's important to know that sprays of any sort won't be effective against caterpillars of any sort if applied when the critters are more than half-grown.

That said, hand-picking is effective against all ages.





## HORTICULTURAL CALENDAR IN THE METRO AREA

- Apr 2** Washington Country Chapter, Theresa Sprauer, Peonies
- Apr 3-4** Spring Bareroot Fruit Tree Sale – One Green World
- Apr 4** Garden Palooza Plant Sale – Fir Point Farms, Canby
- Apr 10-12** Hardy Plant Society Spring Sale, Portland Expo Center
- Apr 13** Clackamas County Chapter – Plant Swap, Rich Baer, The Role of Roses in Our Region
- Apr 14** Multnomah County Chapter, 6pm Welcome Potluck for Intern MGs, 7pm: Speaker Gail Langellotto, Statewide Coordinator OSU Master Gardener Program, Beneficial Insects in the Garden.
- Apr 18** Earth day Celebration – Oregon Garden, Silverton
- Apr 18** Haggen Planting Days – see announcement further in this issue
- Apr 19** Planting, Ivy Pull, Nature Enhancement – Iron Mountain area of Lake Oswego
- Apr 25** Washington County Chapter – **Three-Buck-Bonanza** plant sale at the Kinton Grange. See chapter page for details
- Apr 25** Aloha Garden Club Plant Sale 9am to 3pm. Aloha Huber Park Elementary School
- Apr 25** Columbia County Spring Garden Fair – see announcement further in this issue
- Apr 25** Haggen Planting Days – See announcement further in this issue
- May 2-3** Clackamas County **SPRING GARDEN FAIR** – Clackamas County Fairgrounds, Canby
- May 8 – June 7** Schreiner's Iris Gardens open to the public, 3625 Quinaby Rd.N.E., Salem
- May 12** Multnomah County Chapter, 7pm: Speaker Paul Conine, Co-owner Xera Plants, Crape Myrtles in the Pacific Northwest
- May 16** Volunteer orientation for International Rose Test Garden, Washington Park kiosk, 9am (also on May 30 and June 3)
- May 30** Hardy Plant Society Spring meeting-Dan Hinkley speaking on his newest book **Shrubs and Vines for the Explorer's Garden**
- May 30** Starlight Parade
- June 4-5** Portland Rose Society's 120<sup>th</sup> Annual Rose Show-Lloyd Center; see PRS website for details ([www.portlandrosesociety.org](http://www.portlandrosesociety.org))
- June 5** Gardens in Senior Living Seminar – see announcement further in this issue
- June 7** Portland's Best Rose Trials – Washington Park, International Rose Test Garden
- June 9** Multnomah County Chapter 7pm Speaker Weston Miller, OSU Extension Community and Urban Horticulture Faculty, Year Round Intensive Gardening: Focus on Winter Veggies.
- August 29,30,31 and September 5,6,7** 2009 Annual Dahlia Festival, Swan Island Dahlias, Canby

**New Master Gardener interns from the class of 2009! (and vets too )** Are you interested in upgrading your ID skills of critters, plant diseases and plant disorders? If you are, you are invited to join the MG Interest Group with fellow MGs and our resident expert diagnostician, Jean Natter! This is a free and informal class.

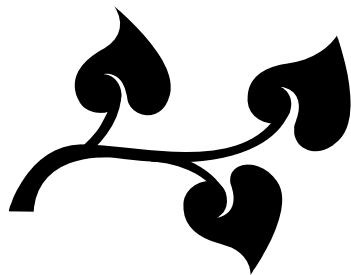
The MG Interest group meets at the Capital Center, Room 1411 (Same building as the WA County MG phone office). We meet the 1st and 3rd Monday of the month from 1-3pm.

The 1st Monday we usually work on helping each other ID insects/spiders and plant problems that we bring to the meeting. Another feature of the 1st Monday is we also often have mini presentations that MGs choose to present to the group.

The 3rd Monday is a more formal class based on a Study Guide we receive from Jean Natter a week or so ahead of time. (Yes, you are expected to do some homework!)

Space is limited so If you are interested please email Margaret Bayne at: [iansmom2@verizon.net](mailto:iansmom2@verizon.net). or call: 503-803-8885. As a bonus, you can claim 2 hours of volunteer support hours for each class!

Come have fun with fellow Master Gardeners and learn something too!



## **Planting, Ivy Pull, Nature Enhancement Volunteers needed Iron Mountain area of Lake Oswego**

**Mission:** To preserve and promote the natural growth and beauty of the Iron Mountain Natural areas near Brookside.

**March 15 and April 19 from 1-3 p.m.**

Tools, gloves provided  
Wear sturdy boots and rain gear, if necessary

Meet at trail head of Iron Mountain trail (end of Brookside Road, Lake Oswego)

This will be a support activity for both interns and vets unless the MGs are actively educating and answering questions

Hot soup, drinks, treats provided

Friends of Brookside

Mike Buck 503/636-7421



*Children's Gardening Volunteer Project Opportunity for Master Gardeners*



Oregon State University Extension Service  
**Master Gardener Program**

**Program Name:** Peninsula Children's Center

**Program Location:** 4720 N. Maryland Ave Portland Oregon 97217

**Program Type:** Childcare and early childhood education

**Program Description:** Establish a vegetable garden that is safe and educational for preschool children. Enhance the outdoor attractiveness of the childcare center. The Center has a seasonal vegetable garden which the children participate in caring for. The Center also has landscaped grounds that need refurbishment.

**The role that Master Gardeners will play in this program:** The Master Gardener would act as a consultant, and assist in planting specifically in the case of landscaping improvements.

**The types of Master Gardener skills and interests sought after for this program:** Knowledge about landscaping plants and trees.

**Number of Master Gardeners needed:**

**Start Date:** March 2009

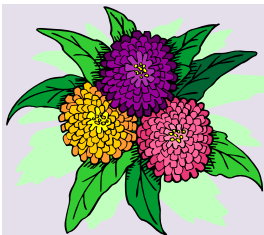
**End Date:** N/A

**Times:** The Center is open Monday through Friday 6:30am-6pm.

**Contact Person's Name:** Deborah Lockwood, Volunteer Coordinator

**Phone Number:** 503-280-0534

**Email:** [deborahlockwood@penchild.org](mailto:deborahlockwood@penchild.org)



**The Aloha Garden Club is holding a plant sale on April 25 from 9am to 3pm at the Aloha Juber Park Elementary School on 173<sup>rd</sup> off of Farmington Rd. A wide variety of plants will be available for sale including dicot and monocot perennials and annuals as well as shrubs and trees.**



**CLACKAMAS COUNTY MASTER GARDENERS™**

Twenty-fifth anniversary of the Clackamas County Master Gardeners  
**25<sup>th</sup> Annual**

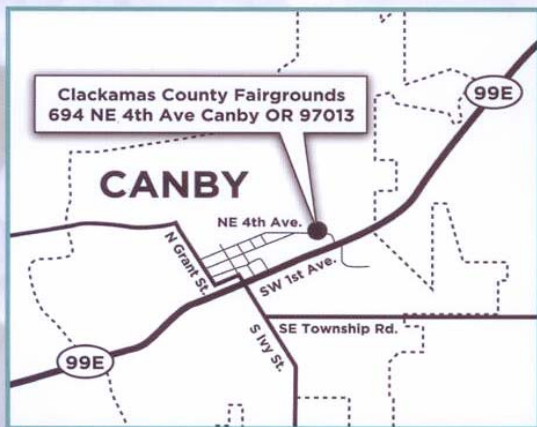
*...And, back by popular demand*

- Containers & planting by Master Gardeners
- New plant introductions

*Spring Garden Fair*  
*Annuals & Perennials Vegetables & Herbs Shrubs & Trees Garden Art & Tools*

**Clackamas County Fairgrounds**

**Saturday, May 2<sup>nd</sup> 9<sup>to</sup> 5 pm & Sunday, May 3<sup>rd</sup> 9<sup>to</sup> 4 pm**



**Fairground Admission \$3**  
**Parking Free**

UNDER 16 FREE • NO PETS

- Free seed packets
- Bring your samples for free pH soil testing
- 10-Minute University classes
- Master Gardeners to answer questions
- Hourly raffle prizes
- Refreshments for sale
- Convenient plant check
- ATM on-site

[www.ClackamasCountyMasterGardeners.org](http://www.ClackamasCountyMasterGardeners.org)

Proceeds benefit the Horticulture Scholarship Fund and other causes  
Sponsored by Clackamas County Master Gardeners and Oregon State University Extension Service



## SEE YOU AT THE FAIR?

BY DIANE COOPER, WASHINGTON COUNTY CLASS OF 2002

Got a perfect pepper in your garden? A very tall sunflower? Maybe your bees are working overtime and you have some glorious honey. Your roses are having a banner year. Or, you've grown a truly weird looking squash. Hey, show them all off!

Fair season is upon us! It is easy, inexpensive and fun to enter your county fair. All the fairs have websites with rules and entry forms you can download. "New exhibitors should read the entry forms carefully," advised Washington County Fair Manager Leah Perkins-Hagele.

For gardeners, there are two categories of interest: Land Products (eggs, honey, fruit, vegetables, nuts, etc); and Floral (Horticulture Class) perennials, shrubs, annuals, roses, trees, vines, etc. The rules are clear that to enter, you must be an amateur; everything must be grown on land you own or rent; and everything must be grown this year (except nuts and grains). Make sure you read the rules specific to your county.

Generally, there is a different drop-off day and time for each category, so if you were going to enter your blueberries and your roses, you would find yourself at the fairgrounds at two separate times. This is a good reason to get together with your friends and split the work. Luckily, you can pick up your entry (and your ribbons! and cash prizes!) on the day after the fair.

The fair handbooks are specific about how you should choose your entry. Trueness to type, uniformity (if entering a group of radishes, for instance), medium rather than large size for most veggies, and cleanliness are all suggested. For each type of vegetable, the number to bring is included: one pumpkin, five tomatoes, five skinned red potatoes. And for flowers, three daisy blooms, three stems of coreopsis, one hosta leaf. Surely the slugs have left you one perfect hosta leaf?

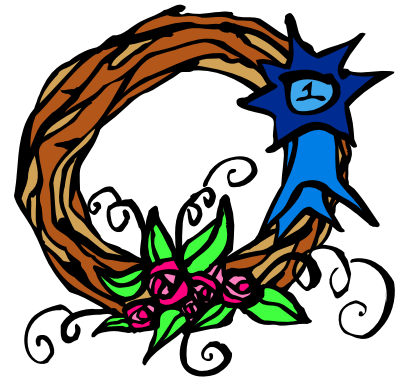
This is one event where procrastination pays off. Print off some entry forms and take a walk in the garden the day your entries are due. What looks good? Snip it, stick it in a glass jar and fill out the form. Usually there is a limit of one entry per category (you cannot enter all seven of your geraniums, for instance). And for one county fair, at least, you are limited to 65 entries per person. Pray you don't get in line behind that person!

Fair dates for 2009 are: Multnomah County, May 23-25; Washington County, July 30-August 2; and Clackamas County, August 18-23. The attendance at the fairs last year was 35,000, 89,567 and 112,450 respectively. This year the Multnomah County Fair will be held in Oaks Park and attendance is expected to rise.

Websites for the fairs are usually updated a couple of months before the fair. Washington County's link will be updated May 1. It is: <http://www.faircomplex.com>

I have attached last year's entry form for Washington County for your information.

If you enter, let us know how you did, and email a photo for our website!



## Children's Gardening Volunteer Project Opportunity for Master Gardeners



Oregon State University Extension Service  
**Master Gardener Program**

**Program Name:** Community Transition Program, Portland Public School

**Program Location:** Roosevelt High School

**Program Type:** Transition: Independent living for students with disabilities age: 18 to 21

**Program Description:** We run a community transition program that assists students with disabilities in transitioning to adulthood. Part of that process includes health, nutrition and self preservation. Gardening meets many of those goals. We also have a vocational aspect to our program and we are seeking to create our own jobs with the health of the planet in mind.

**The role that Master Gardeners will play in this program:** The Master Gardener would teach staff and students about healthy soils and how to reach that goal. Assistance in design, maximum usage of the space, and assistance in building raised beds. Perhaps some instruction in correct usage of tools, water and environment.

**The types of Master Gardener skills and interests sought after for this program:** Knowledge of organic gardening techniques, healthy soil, water saving techniques, maximizing space, and general northwest vegetable gardening techniques.

**Number of Master Gardeners needed:** 1

**Start Date:** ASAP

**End Date:** May?

**Times:** It would be nice to have someone come out once or twice a week while we are creating the garden. Our program runs from 9 am to 2:30 pm M-F

**Contact Person's Name:** Donna Fletcher

**Phone Number:** 503-916-5260 x71455

**Email:** dfletche@pps.k12.or.us



## April 25--Spring Garden Fair

Preparations are well under way for the **Columbia County Master Gardener™ Association's** 14<sup>th</sup> annual event. This year's fair will be on Saturday, April 25, 9:00 AM to 3:00 PM in the Commons of St. Helens High School, 2375 Gable Road in St. Helens. Admission and parking for this event are free.

Master Gardeners will offer 6,000 tomato plants from 50 standard and heirloom varieties, for only \$1.25 per plant. Come early for the best selection. During last year's Spring Garden Fair more than 5,000 tomato plants were sold. We will have OSU certified Master Gardener™ volunteers to provide tomato-specific information at the tomato sale.

The Master Gardener™ plant clinic table will be stocked with information on many garden subjects and will have OSU certified Master Gardener™ volunteers to answer your gardening questions. On display will be our chapter's insect collection, a cold frame, a mason bee house and a compost maker.

As in years past, more than two dozen local vendors will be offering garden-related items such as garden art, ceramics, herbs, trellises, perennials, containers, shrubs, trees and more. Vendors will be both inside the Commons and outside in the courtyard.

Dozens of raffle prizes will be given away throughout the day. This year's prizes include a garden cart, containers, gift certificates, bird houses, fertilizers and much more to come!!!!

Raffle tickets are on sale now and can be purchased for only \$1 each from many Columbia County Master Gardeners, at the OSU Extension Service in St. Helens and will be available at the fair.

For more information, contact the Columbia County Extension Service at 503-397-3462 or visit our website [www.columbiacountymastergardeners.org](http://www.columbiacountymastergardeners.org).



### **2009 MG Marching Unit**

*For only one night each year the OSU Master Gardener Marching Unit and Drill Team (we carry shrub rakes) emerge from hibernation to strut their stuff through the streets of downtown Portland during the annual Starlight Parade. Entrants come costumed as a favorite insect, plant or in your finest gardening togs. It's worth 6 hours of hilarious payback time, practice is on-site and carpooling is arranged. Hours are about 6 to 10 pm on Saturday, May 30<sup>th</sup>, 2009. We're also looking for a few MGs to help us out with planning activities, etc. We've garnered awards in 2006 and 2008 and this year we're aiming for the first ever "Going Green" category. Do Master Gardeners know anything about **GREEN?***

*For questions or to sign up please contact Stephanie Scott at (503)292-2198 ([s.r.scott@comcast.net](mailto:s.r.scott@comcast.net)) or Bob Blaedel at (503)658-7450 ([machinewayback@hotmail.com](mailto:machinewayback@hotmail.com))*

**WE'RE ALSO LOOKING FOR A MARCHING BASS DRUM AND SNARE TO ESTABLISH A DRUM LINE FOR THIS YEAR'S EVENT.**

# Manure Link

## Tualatin Soil and Water Conservation District



### Got Manure? Need Manure?

The Tualatin Soil and Water Conservation District is organizing a **FREE** program that will benefit livestock owners and landowners looking for free fertilizer in Washington County.

### What is Manure Link?

A program that will bring together gardeners and other landowners searching for sources of local, **free**, organic fertilizer with livestock owners and managers with excess fresh and composted manure.

### Goals

- Help livestock owners and managers get rid of unwanted manure
- Provide a source of fertilizer to interested landowners in Washington County
- Protect water resources by removing a potential source of pollution from farms

Please visit <http://www.swcd.net> for more information!



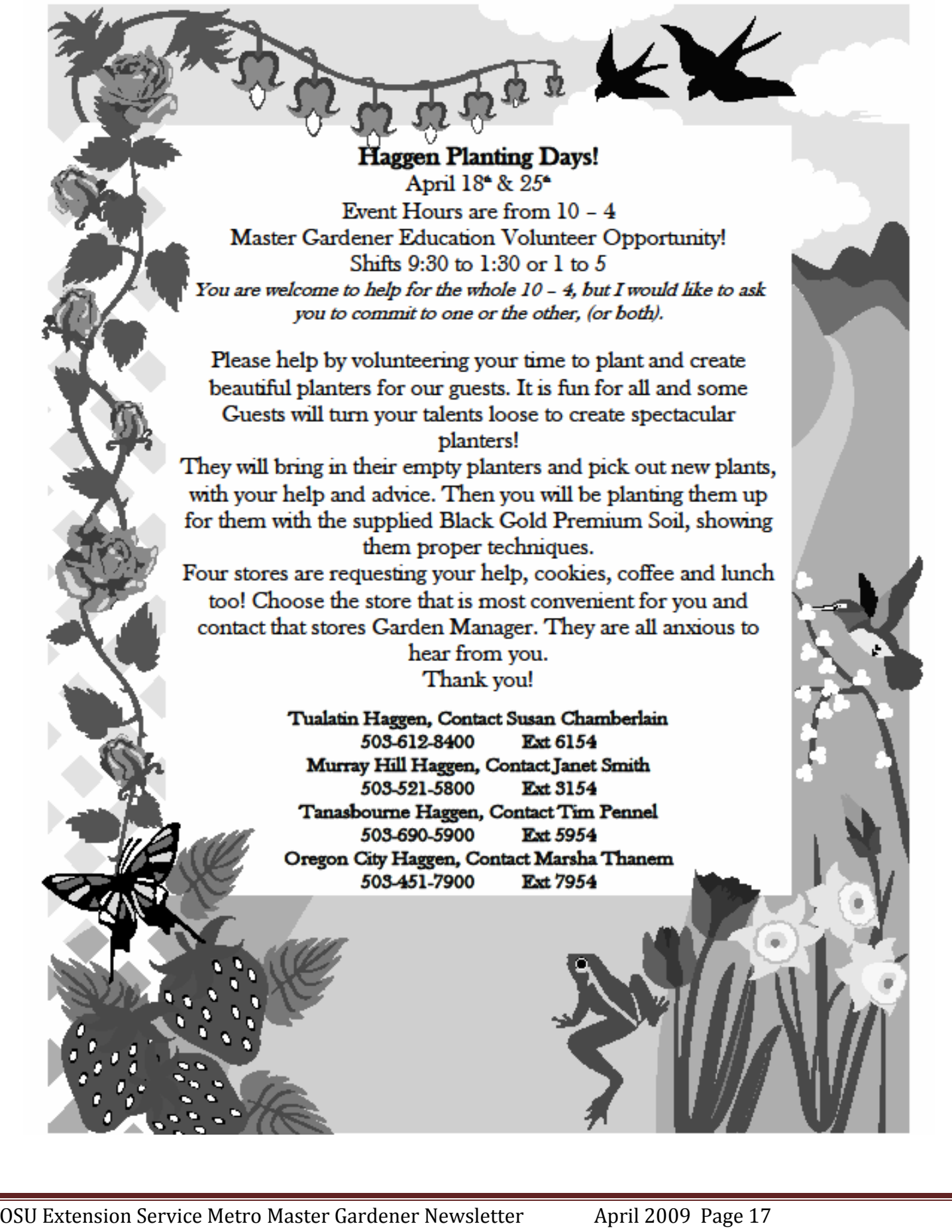
*Providing local solutions  
to local problems.*

### Tualatin Soil and Water Conservation District

1080 SW Baseline  
Suite B-2  
Hillsboro, OR 97123

Phone: 503-648-3174 ext. 102  
Fax: 503-681-9772  
E-mail: [lacey.townsend@or.nacdn.net](mailto:lacey.townsend@or.nacdn.net)





**Haggen Planting Days!**

April 18<sup>th</sup> & 25<sup>th</sup>

Event Hours are from 10 - 4

Master Gardener Education Volunteer Opportunity!

Shifts 9:30 to 1:30 or 1 to 5

*You are welcome to help for the whole 10 - 4, but I would like to ask you to commit to one or the other, (or both).*

Please help by volunteering your time to plant and create beautiful planters for our guests. It is fun for all and some Guests will turn your talents loose to create spectacular planters!

They will bring in their empty planters and pick out new plants, with your help and advice. Then you will be planting them up for them with the supplied Black Gold Premium Soil, showing them proper techniques.

Four stores are requesting your help, cookies, coffee and lunch too! Choose the store that is most convenient for you and contact that stores Garden Manager. They are all anxious to hear from you.

Thank you!

Tualatin Haggen, Contact Susan Chamberlain

503-612-8400 Ext 6154

Murray Hill Haggen, Contact Janet Smith

503-521-5800 Ext 3154

Tanasbourne Haggen, Contact Tim Pennel

503-690-5900 Ext 5954

Oregon City Haggen, Contact Marsha Thanem

503-451-7900 Ext 7954

# GARDENS IN SENIOR LIVING SEMINAR

## Fact Sheet

- WHAT** The *Gardens in Senior Living* seminar focuses on the research, design, programming and maintenance issues pertaining to gardens especially developed for older adult populations. Sponsored by the Friends of the Portland Memory Garden, seminar topics will include research on gardens in senior care settings; garden design elements; administration and maintenance; year-round indoor and outdoor programming for residential environments as well as public gardens for dementia clients and their caregivers; and practical applications.
- WHO** This professional seminar is especially created for these audiences:
- Long-term care facility administrators, managers, marketing and recreation planning professionals
  - Landscape architects and designers
  - Horticultural therapists
  - Activity professionals serving older adults
  - Geriatric educators and researchers
  - Master Gardeners and those working toward such certification
  - Parks and recreation staff
  - Other health care professionals who serve the elderly and those with dementia
- WHEN** Friday, June 5, 2009  
9 a.m. to 5 p.m.
- WHERE** Legacy Good Samaritan Hospital Auditorium  
1040 N.W. 22<sup>nd</sup> Avenue, Building 2  
Portland, Oregon 97210
- WHY** To provide greater understanding of the benefits of specialized gardens and horticulture therapy among those who serve older adults, especially those with memory disorders.
- HOW** The registration fees are:
- |                     | <u>Postmarked by May 15</u> | <u>After May 15</u> |
|---------------------|-----------------------------|---------------------|
| Individuals         | \$75                        | \$90                |
| Groups of 3 or more | \$65 each                   | \$80 each           |
- CONTACTS** For a seminar brochure or more information about *Gardens in Senior Living*, please contact Patty Cassidy at [cassidy@comcast.net](mailto:cassidy@comcast.net); 503-239-9174. Alternate contact: Teresia Hazen at [thazen@lhs.org](mailto:thazen@lhs.org); 503-413-6507.



## Plants for hummingbirds

CORVALLIS - By planting certain flowers and shrubs, home gardeners can provide food and habitat for hummingbirds.

In Oregon, the most commonly seen hummingbird species are the rufous hummingbird and Anna's hummingbird, said Dan Edge, wildlife biologist with the Oregon State University Extension Service.

Rufous hummingbirds, found in all but the southeast corner of the state, migrate south for the winter, returning north to most regions of the state in late February and March. Anna's are year-round residents in Oregon's Coast Range. There are also small summer populations of three other species of hummingbirds that barely make it into Oregon - the black-chinned, Allen's and calliope hummingbirds.

Given the right plants, hummingbirds will frequent your yard, zooming around, beating their wings at 70 to 80 times or more per second. Hummingbirds need to eat about half their body weight daily in nectar and insects. Plant nectar provides instant energy and insect prey provides protein for muscle growth. As these tiny birds feed on nectar plants they also pollinate the blossoms.

Hummingbirds love nectar-rich flowering plants with bright red, orange or red-orange tubular-shaped blossoms. By planting a succession of nectar flowers, shrubs and trees that will bloom from spring to fall, you can give hummingbirds a continual source of food through the seasons.

Spring and early summer blooming flowers good for hummingbirds include: bleeding heart, columbine, fuschia, lupine, petunias, phlox and sweet William. Later in the summer into fall, hummingbirds feed on bee balm, butterfly bush (Buddleia), dahlia, hollyhock, four-o'clock, zinnia, cardinal flower, beard tongue (penstemon), scarlet gilia and sage (salvia), to name a few.

Flowering shrubs hummingbirds feed on include azaleas, wild Indian plum, red elderberry, red flowering current and flowering quince. Hummingbirds also feed on the nectar of hawthorne, horse chestnut and flowering crabapple trees. Vines they prefer include twin berry, morning glory, clematis, trumpet creeper, honeysuckle and scarlet runner bean.

Mail order seed companies that sell many of the seeds for hummingbird flowers include: Nichol's Garden Nursery, 1190 North Pacific Hwy., Albany, OR 97321-4598; and Territorial Seed Company, P.O. Box 157, Cottage Grove, OR 97424.

By: [Carol Savonen](#)

Source: [Dan Edge](#)





OSU Master Gardener™  
Washington County Chapter

# Spring Plant Sale & Raffle

Saturday, April 25<sup>th</sup>, 2009  
8:30 AM to 3:00 PM



Kinton Grange  
19015 SW Scholls Ferry Road  
(5 miles west of Washington Square)

Most perennials are \$3 a gallon.  
Also offering small shrubs, ferns, natives,  
bare-root trees, \$1 a pot table,  
yard art, and great raffle items

Checks or Cash only





# Washington County Chapter Chat

Oregon Master Gardener™ Association in cooperation with

OSU Extension Service Master Gardener™ Program

Chapter Website: [www.wcmga.info](http://www.wcmga.info)

## UPCOMING PROGRAMS –

### MARK YOUR CALENDAR

April 2<sup>nd</sup> **POTLUCK at 6:00 pm** – EAT at 6:15 pm

**Chapter meeting at 6:45 pm**

**Program 7:15 p.m. to 8:15 pm, “Peonies”** – Theresa Sprauer, Brooks Gardens

**May 7, 2009 “Heirloom Varieties”** Michael Stucky, Millennium Farms

**Presentations are from 7:15 - 8:15 p.m.** at the CAPITAL Center, 18640 NW Walker Rd (185<sup>th</sup> & Walker Rd) Rm 1411. The public is welcome.

## WELCOME CLASS OF 2009 INTERNS

April 2<sup>nd</sup> we are having a potluck to show appreciation for the great group of students we have this year. Veteran Master Gardeners are asked to please bring a dish to share with the new class. Plan on arriving at 6:00 pm and we will eat at 6:15 pm. Below is a guideline for what to bring if your last name starts with:

- A thru K Salads & appetizers
- L thru R Main dish or side dish
- S thru Z Dessert

Chapter meeting and program will follow.

Thank you from *Barbara Knopp*

## PLANT SALE RAFFLE APRIL 25<sup>TH</sup>

Last year the raffle was a successful and fun part of the annual plant sale. We could not have done this without your help so I am asking for help again this year in the form of raffle items or cash to purchase items. Some suggestions include yard art, pots, tools, gloves, books, birdhouses etc. See Barb Knopp at Chapter Mtg. or Contact Barb with your questions & donations, email [barbknopp@comcast.net](mailto:barbknopp@comcast.net) or call (503) 641- 0429.

## THREE-BUCK-BONANZA PLANT SALE

Five miles west of Washington Square at Kinton Grange, 19015 SW Scholls Ferry Road, Beaverton 97007

**Saturday April 25<sup>th</sup> 8:30 – 3:00**

Most perennials \$3.00/gallon. We’re also offering small shrubs, ferns, natives, bare-root trees, dollar-a-pot table, yard art and great raffle items.

**REMINDER:** Our success depends on your donations! April 2<sup>nd</sup> is the cutoff time for dividing your perennials for our chapter’s major fundraising event. We need good quality, gallon-size perennials in categories such as: spring and summer-blooming, water-wise (new offering!), shade, native, ferns and butterfly/hummingbird attracting. Please bring your plants to the March or April Chapter meetings for pick up. Questions? Call Jane Miller 503-590-3598 or Cindy Muir 503-245-3922. Thanks so much!

*The Plant Sale Crew*

## FUTURE PRESENTATION

**June 4, 2009 “New Plants for 2009”**

Mary Ludlum, Farmington Gardens

President	Ken Keudell	503-292-6519
Vice President	Lynn Cox	503-629-9156
Recording Secretary	Jackie Keil	503-531-3884
Corresponding Secretary	Gini Lang	503-407-6422
Treasurer	Donna Yount	503-746-6198
OMGA Rep	David Rullman	503-292-1603
Alternate Rep	Jerry Knott	503-292-1939
Dir.#1 Business	Bill Klug	503-681-0143
Dir.#2 Program	Alan Strong	503-690-1882
Dir.#3 Publicity	Lynn Wagner	503-531-9239
Dir.#4 Fundraising	Anna Stubbs	503-643-9474
Dir.#5 Chapter Relations	Barbara Knopp	503-641-0429
Editor:	Gini Lang	503-407-6422

Submit Chapter Chat Announcements to Gini Lang, Chapter Chat Editor, by the 11<sup>th</sup> each month. Phone 503-407-6422 or e-mail Gini Lang [[lang2044@comcast.net](mailto:lang2044@comcast.net)].

Submit general chapter announcements to Cathy Mankus, e-mail coordinator, [cathy@cathymankus.com](mailto:cathy@cathymankus.com)

Chapter Website: [www.wcmga.info](http://www.wcmga.info)



# Clackamas County Chatter



April 2009 A chapter newsletter for the Oregon Master Gardener Association in cooperation with OSU Extension Service Master Gardener™ Program

## April Chapter Meeting

Monday, April 13

Milwaukie Center

5440 SE Kellogg Creek Drive,  
Milwaukie

### 7:00 p.m. Roses in Our Region by Georgiana Pittock

Mrs. Henry Pittock is an iconic Portland figure who was instrumental in organizing the first Rose Show in 1889. She is often referred to as the 'mother of the Rose Society.'

The first Rose Show was a fundraiser for Georgiana's church. Vivacious and frank, she was a great lover of gardening and of the rose, and her influence helped to christen Portland the 'City of Roses.' Her former residence, the Pittock Mansion, is one of Portland's beloved landmarks and popular tourist attraction.

*Followed by*

### New roses for the NW Gardener by Rich Baer

No one knows roses in our area like Rich Baer. To his credit are thousands of pictures published in magazines and books and numerous wins in national photography contests on roses. Rich has grown roses for over 55 years and is a consulting rosarian. His presentation will be packed with 'eye candy' from his collection of photographs, in addition to expert advice on the selection and growing of roses in our own gardens.

## Upcoming Events

### PreMeeting Plant/Seed Swap

April 13 6:30 p.m.

Milwaukie Center

Bring your labeled packaged seed and potted plants and Share the Love!

Also remember to bring your plant donations for the Spring Garden Fair.

### Propagation Workshop

April 4 10-12

Clackamas Community College

Learn from Elizabeth Howley, CCC faculty, how to propagate from seed and cutting through hands-on exercise. Workshop is \$6 and includes planted seed and cutting trays to take home.

To register, contact Madeline Forsyth at

503-465-1113.

### Tomato Workshop

April 18 10-12

Clackamas Community College

Learn from MGs Bill Bradley, Bob Woods, and Sherry Holley tomato culture including seed, transplants, staking/support, disease management, watering, pruning, and fertilizing.

Workshop is \$5 and includes a 5' tomato cage to take home. To register, contact Sherry Holley at 503-652-8016.

### May Chapter Meeting

Emerging Pests of Ornamental Plants

May 11 7:00

Milwaukie Center

## The 25<sup>th</sup> Annual Spring Garden Fair May 2-3

Possibly the largest two-day garden event in Oregon!

This year, 175 vendors are expected to supply an array of plants, garden art, and furniture.

The ever-popular Potting Station will pot up purchases, and at New Plant Introductions you can place a silent bid on your favorite new introductions donated by some of the best growers anywhere.

Raffle tickets will be available for a chance on great plants and 10-Minute University presentations will be made throughout the day. Outside food vendors will serve the usual brats, burgers, soft drinks, popcorn, coffee and maybe more.

**Volunteers are always needed and appreciated. To help with the event, please contact Spring Garden Fair Volunteer Coordinator Karen Greenleaf at 503-762-7775 or email at [kcgreenleaf@q.com](mailto:kcgreenleaf@q.com)**

*Rodger Sanman*

March Green Glove Award went to **DARLENE SANMAN** for her outstanding effort on the 2009 membership directory, the Sunshine Committee, and as co-chairperson of the SGF Hospitality Committee  
A round of applause for Darlene!!

### Clackamas County Chapter Officers

President	<b>Bill Bradley</b>	503-624-8435	Advisory Board	<b>John Hill</b>	503-653-9524
Vice President	<b>Rick Mishaga</b>	503-557-4491		<b>Dale Eggers</b>	503-557-3152
Secretary	<b>Cheryl Borden</b>	503-723-4257		<b>Martha Waldemar</b>	503-698-2519
Treasurer	<b>Mary Butler</b>	503-632-1532	Newsletter	<b>Holly Pederson</b>	503-701-5816
Asst. Treasurer	<b>Trudy O'Donnell</b>	503-636-1697	Websites	<a href="http://extension.oregonstate.edu/mg/metro/">http://extension.oregonstate.edu/mg/metro/</a>	
OMGA Rep	<b>Denise Dwan</b>	503-632-3035		<a href="http://www.clackamascountymastergardeners.org/">http://www.clackamascountymastergardeners.org/</a>	
OMGA Alternate Rep	<b>Nikki Mantei</b>	503 577-4494			



MULTNOMAH CHAPTER GRAPEVINE  
Oregon Master Gardener™ Association in cooperation with  
OSU Extension Service Master Gardener™ Program  
4742 SE 39<sup>th</sup> Ave. Portland, OR 97206

**14 April, 2009 Chapter Meeting**

Mt. Tabor Presbyterian Church  
5441 SE Belmont  
(Parking on the west side)

**6:00pm Potluck**

This is to welcome the new Master Gardeners. Please bring your own dishes. Veterans bring food to share.

**6:50 pm - Announcements**

**7:00 pm - Beneficial Insects in the Garden**

**Speaker: Gail Langellotto, Statewide Coordinator, OSU Master Gardener Program**

Gail Langellotto is the Statewide Coordinator of the OSU Master Gardener Program, and an urban and community horticulture Extension specialist at OSU. Her research and Extension activities focus on developing a thorough understanding of how gardeners can work with insects towards a more sustainable and productive garden. Specifically, she works to understand how gardens can be managed as conservation areas for bees and other beneficial insects, as well as how ecological interactions in gardens are impacted by the surrounding landscape.

**\*\*\*12, May 2009 Chapter Meeting**

**7pm, Crape Myrtles in the Pacific NW**

**Speaker: Paul Bonine, co-owner Xera Plants**

**\*\*Next Board Meeting – Tuesday 7 April 2009 - 6:30 pm at Jean Edmison's home – 7606 S.E. Ellis**

**\*\*\*Please continue to bring digital photos of Master Gardeners and gardening to the meetings.**

**\*\*\* April 30 is the deadline for the following:**

Outstanding County Master Gardener of the Year recognizes a veteran master gardener for outstanding volunteer efforts on behalf of the Multnomah Chapter, such as participating in an ongoing committee, serving in leadership capacity, innovating or initiating chapter activities. The nominee's work must be of some time rather than a one-time event or one-time committee.

Behind the Scenes Master Gardener of the Year recognizes efforts of a veteran master gardener whose support, activities and work sustain chapter activities of the master gardener program in Multnomah County.

The Multnomah County nominee for State Master Gardener of the Year must demonstrate leadership qualities in support of the chapter and OMGA activities

**Nominees** for each of these awards must be a veteran master gardener who has completed their re-certification and payback requirements.

Annually, outside individuals, groups and businesses that have supported the Multnomah Master Gardener Chapter with in-

kind contributions of facilities and personal efforts may receive certificates honoring their contributions.

Please submit written nominations for the three awards and the individual and business for certificates of honor by April 30, 2009 to Barbara Beck, Awards Committee Chair. 4212 SE Ellis St. Portland, OR 97206 or [bjbeck@pacifier.com](mailto:bjbeck@pacifier.com)

**\*\*\*15 May 2009 is the deadline for Scholarship**

**Applications.** Contact Barbara Beck for an application.

**\*\*\*Demo Garden** – The schedule is changed to Thursdays from 9am to about noon or the second Saturday of the month. Another way to help would be to save seeds. Questions should be directed to Jean or Sharon.

**\*\*\*If you can help with the Multnomah County Booth at the Clackamas County Spring Fair** please contact Joyce Hemmerling or Sharon Baker.

**\*\*\*When you start digging this spring, please remember to save plants for the Fall Plant Sale on 3 October 2009.** Call Joyce Hemmerling with any questions.

**\*\*\*Our chapter needs more used garden books to sell at the Canby Spring Fair.** Please bring your unwanted ones to the meetings or contact Sharon Baker for any other arrangements. Her numbers are 503-284-5189 or [gazebo@teleport.com](mailto:gazebo@teleport.com). Please do not bring magazines.

**\*\*\*We have an office with phones in Multnomah County!** – Starting 30th March. Gloria Bennett 503-775-4005 or [dcleopatra@comcast.net](mailto:dcleopatra@comcast.net) is managing the calendar. The phone hours are 10am-2pm Monday to Friday. Two to four hour shifts.

**2009 Officers**

President – Jean Edmison - 503-771-2486

Vice President – Sharon Baker - 503-284-5189

Secretary – Jo Ann Bones – 503-253-3168

Treasurer – Robin Case – 503-762-3964

Past President – Patrick Adams – 503-287-9071

OMGA Sr. Rep. – Joyce Hemmerling - 503-331-0824

OMGA Rep. – Marilyn Kongslielie – 503-289-8889

Historians – Velda Altig, Claudia Groth and Jim Colahan

Grapevine – Lorna Schilling – 503-334-5162



# April 2009

## Garden hints from your OSU Extension Agent

- Early April: fertilize lawn, let spring rains carry the fertilizer into the soil.
- If lawns are becoming thin and sickly, consider overseeding with a mixture of perennial ryegrass and fine fescue.
- Protect dogwood trees, as they begin growth, against anthracnose diseases. Apply a copper fungicide or Daconil. Rake and destroy fallen leaves spring through fall.
- Help youngsters start a garden this year with carrots, chard, lettuce, onions, and peas.
- Bait for slugs; iron phosphate baits are available that are safe for use around pets. Clean up hiding places for slugs, sowbugs, and millipedes.
- Allow foliage of spring-flowering bulbs to brown and die down before removing.
- Prune and shape or thin spring-blooming shrubs and trees after blossoms fade.
- Control rose diseases such as black spot and powdery mildew. Remove infected leaves. Spray as necessary with registered fungicide. Prune ornamentals for air circulation and to help prevent fungus diseases.
- Prepare garden soil for spring planting. Incorporate generous amounts of organic materials and other amendments as needs are shown by soil analysis.
- Use floating row covers to keep insects such as beet leaf miners, cabbage maggot adult flies, and carrot rust flies away from susceptible crops.
- Monitor strawberries for spittlebugs and aphids; control if present.
- Cut and remove weeds near the garden to remove sources of plant virus diseases.
- Spray for apple scab, cherry brown rot, and blossom blight. See EC 631, *Controlling Diseases and Insects in Home Orchards*.
- Apply commercial fertilizers, manure, or compost to cane, bush (gooseberries, currants, and blueberries), and trailing berries.
- Plant gladioli, hardy transplants of alyssum, phlox, and marigolds, if weather and soil conditions permit.
- Prepare raised beds in areas where cold soils and poor drainage are a continuing problem. Add generous amounts of organic materials.
- Place compost or well-decomposed manure around perennial vegetable plants.
- Watch for botrytis blight on peonies.
- Check started seeds for damping-off.
- Cover transplants to protect against late-spring frosts.
- *Southwest Oregon*: place pheromone traps in apple or pear trees in late April to monitor codling moth activity.
- Plant these vegetables:
  - Oregon coast*: beets, cabbage, carrots, cauliflower, celery, chard, slicing cucumbers, endive, leeks, lettuce, onion sets, peas, potatoes.
  - Western valleys, Portland, Roseburg, Medford*: broccoli, Brussels sprouts, cabbage, carrots, cauliflower, chard, chives, endive, leeks, lettuce, peas, radishes, rhubarb, rutabagas, spinach, turnips.
  - Central Oregon and higher elevations of eastern Oregon (late April)*: peas, radishes, lettuce, spinach, turnips.
  - Columbia and Snake River valleys, Ontario*: snap and lima beans, beets, broccoli, Brussels sprouts, cabbage, carrots, cauliflower, chard, chives, sweet corn, cucumbers, kohlrabi, leeks, lettuce, onion sets, parsnips, peas, potatoes, pumpkins, radishes, rhubarb, rutabagas, summer and winter squash, turnips.

Oregon State University Extension Service encourages sustainable gardening practices. Always identify and monitor problems before acting. First consider cultural controls; then physical, biological, and chemical controls (which include insecticidal soaps, horticultural oils, botanical insecticides, organic and synthetic pesticides). Always consider the least toxic approach first.

All recommendations in this calendar are not necessarily applicable to all areas of Oregon. For more information, contact your local office of the OSU Extension Service.

Trade-name products and services are mentioned as illustrations only. This does not mean that the Oregon State University Extension Service endorses these products and services or intends to discriminate against products and services not mentioned.

**Oregon State** | **Extension**  
**UNIVERSITY** | **Service**

Gardening information online—<http://extension.oregonstate.edu/gardening>